

**WEEK 2 Ordinary Time***Choir: left side*

Prayer Leader: Sr. Mary Ann Verkamp  
 Reader: Srs. Gail Hamilton/Jackie Kissel  
 Intoner: Sr. Sharon Hollander

**MORNING PRAYER**

SUN: (7) Corpus Christi, Sol. F'day Bk. p. 403

Inv. Ant. sung, Intoner vs. Psalm 100 SDM

Hymn: BB 368 "Shepherd of Souls"

Ps. 99 – Mode 2 Ps. 81 – Intoner/All

Canticle – Mode 8 Ps. 150 – Mode 1

Resp. sung Ben. Ant. p. 409

Ben. D – Mode 1a

MON: (8) Melania the Elder, Mem. p. 49

Inv./Hymn: BB 512 "Christ in Me Arise" Str/STG

Ps. 76 – Mode 5a Ps. 88 – Recite

Canticle – Mode 1a Ps. 147a – Mode 8

Resp. sung Ben. Ant.

Ben. F

TUES: (9) Weekday p. 56

Inv./Hymn: #5 "Morning Hymn" TB

Ps. 45 – Intoner/All Ps. 47 – Mode 6

Canticle – Mode 5a Ps. 147b – Mode 7a

Resp. sung Ben. Ant.

Ben. A – Mode 8a

WED: (10) Weekday p. 62

Inv./Hymn: #1 "O Splendor of God's Glory" SKM

Ps. 29 – Mode 6 Ps. 73 – Intoner/All

Canticle – Recite Ps. 150 – Mode 8

Resp. sung Ben. Ant.

Ben. B – Mode 5a

THUR: (11) St. Barnabus, Mem. p. 68

Inv. Ant. sung, Intoner vs. Psalm 67 SML

Hymn: BB 421 "This Alone"

Ps. 33 – Recite Ps. 97 – Mode 5a

Canticle – Mode 6a Ps. 146 – Mode 8a

Resp. sung Ben. Ant.

Ben. E

FRI: (12) Sacred Heart of Jesus, Sol. F'day Bk. p. 422

Inv. Ant. sung, Intoner vs. Psalm 67 STG

Hymn: #2 "All You Who Seek a Comfort Sure"

Ps. 63 – Mode 1a Ps. 97 – Mode 2a

Canticle – Recite Ps. 149 – Mode 5a

Resp. sung Ben. Ant. p. 427

Ben. D – Mode 4

SAT: (13) Immaculate Heart of Mary, Mem. p. 80

Inv./Hymn: BB 694 "Sing of Mary" SSA

Ps. 78c – Intoner/All Ps. 78d – Mode 1

Canticle – Recite Ps. 149 – Mode 8a

Resp. sung Ben. Ant.

Ben. C – Mode 6

**EVENING PRAYER**

The Prayer

Leader SAT: (6) Corpus Christ, Sol. F'day Bk. p. 395  
 introduces Hymn: BB 373 "Panis Angelicus..." (Latin) SRW  
 the Ben. Ant., Ps. 23 – Mode 8a Ps. 34 – Recite  
 Mag. Ant., Ps. 103 – Mode 7a Canticle – Mode 6a  
 and the "Our Father" Gospel: Jn. 6:51-58 Reflection: Sr. Robin Lynn  
 in the Resp. sung Mag. Ant. p. 402  
 absence of the Mag. D – Mode 6 "Salve Regina"

Prioress and Sub-Prioress. SUN: (7) Corpus Christi, Sol. F'day Bk. p. 409

Hymn: BB 563 "O God Beyond All Praising" STG

Ps. 110 – Mode 8 Ps. 111 – Mode 1

Ps. 116b-117 – Mode 7 Canticle – Mode 6

Resp. sung Mag. Ant. p. 414

Mag. C – Mode 5a "Salve Regina"

MON: (8) Melania the Elder, Mem. p. 44

Hymn: BB 315 "O Love of God..." Str/STG

Ps. 136 – Litany Ps. 138 – Mode 5a

Ps. 126 – Mode 6a Canticle – Mode 8a

Resp. sung Mag. Ant.

Mag. K "Hail, O Holy Queen"

TUES: (9) Weekday p. 49

Hymn: BB 630 "Abide with Me" SKM

Ps. 21 – Mode 6 Ps. 26 – Mode 2a

Ps. 30 – Mode 8 Canticle – Recite

Resp. sung Mag. Ant.

Mag. D – Mode 5a

WED: (10) Weekday p. 54

Hymn: #4 "Evening Hymn" SKM

Ps. 19a – Mode 6 Ps. 19b – Mode 7

Ps. 40 – Mode 2a Canticle – Recite

Resp. sung Mag. Ant.

Mag. B – Mode 5a Padre Nuestro

THUR: (11) Sacred Heart of Jesus, Sol. F'day Bk. p. 415

STATIO SML

Hymn: BB 385 "Servant Song" (3 vs.)

Ps. 116b-117 – Mode 1a Ps. 42 – Mode 7a

Ps. 23 – Mode 8a Canticle – Recite

Gospel: Mt. 11:25-30 Reflection: Sr. Jill Reuber

Resp. sung Mag. Ant. p. 421

Mag. A – Mode 7a

FRI. (12) Sacred Heart of Jesus, Sol. F'day Bk. p. 428

Hymn: BB 422 "Christ Be beside Me" STG

Ps. 111 – Mode 1a Ps. 130 – Mode 7a

Ps. 138 – Mode 8a Canticle – Recite

Resp. sung Mag. Ant. p. 433

Mag. E – Mode 7

*Saturday:  
Blessing  
of weekend  
servers*

**MASS CALENDAR**

**June 7 - 13, 2026**

**Cycle A - Year II**

*Presider: Fr. Jeremy*

SUN: (7) Corpus Christi, Sol.  
Ent: BB 345 "Gift of Finest Wheat"  
Glo: BB 870 (Heritage Mass)  
Resp. Ant. sung, BB p. 168, Schola verses  
"Praise the Lord, Jerusalem. Alleluia!"

L 167  
SDM

G. Acc: BB p. 170, Schola verse  
Gospel, Homily, Nicene Creed  
Prayer of the Faithful, Pres. of Gifts  
Prep. of Gifts: Instrumental  
Holy & Serv. Music: BB 871, 873, 875, 876  
Com: BB 323 "Eat This Bread"

---

*Presider: Fr. Julian*

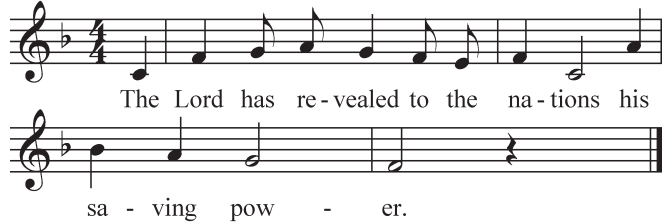
TUES: (9) Weekday L 360  
Ent: BB 466 "We Are the Light of ..." (vs. 1, 2, 4) TB  
Resp. Ant. sung, Prayer Leader verses



G. Acc: BB 846, omit verse (Mass of the Resurrection)  
Holy & Serv. Music: BB 848, 850, 852, 853  
Com: BB 464 "Christ, Be Our Light"

*Presider: Fr. Prior Bede*

THUR: (11) St. Barnabus, Mem. L 362  
Ent: BB 388 "The Summons" (vs. 1, 5) SML  
Resp. Ant. sung, Prayer Leader verses



G. Acc: BB 905 (Mass of Spirit and Grace)  
Holy & Serv. Music: BB 907, 908, 911, 912  
Com: BB 350 "Spirit and Grace"

---

*Presider: Fr. Julian*

FRI: (12) Sacred Heart of Jesus, Sol. L 170  
Ent: BB 410 "Love Has Come" (3 vs.) STG  
Glo: BB 855 (Mass of Renewal)  
Resp. Ant. sung, Schola Sheet  
"The Lord's kindness is everlasting to those who  
fear him."

G. Acc: BB 856, omit verse  
Gospel, Homily, Nicene Creed  
Prayer of the Faithful, Pres. of Gifts  
Prep. of Gifts: Instrumental  
Holy & Serv. Music: BB 858, 860, 862, 863  
Com: BB 486 "We Remember"

---

*Presider: Fr. Jeremy*  
*1 Kgs. 19:19-21; Lk. 2:41-51*

SAT: (13) Immaculate Heart of Mary, Mem. L 364/573  
Ent: BB 205 "Immaculae Mary" SSA  
Resp. Ant. sung, Prayer Leader verses



G. Acc: BB 895, omit verse (Mass of Christ the Savior)  
Holy & Serv. Music: BB 897, 899, 901  
Lamb: Recite (Prayer Leader Intones)  
Com: BB 520 "Shepherd Me, O God"