

WEEK 1 Ordinary Time

Choir: right side

Prayer Leader: Sr. Mary Cheryl Uebelhor

Reader: Sr. Roxanne Higgins

Intoner: Sr. Dolores Folz

MORNING PRAYER

SUN: (31) The Most Holy Trinity, Sol. F'day Bk. p. 383

Inv./Hymn: BB 706 "O God, Almighty Father" SKM

P. 93 – Mode 1 P. 63 – Mode 6

Canticle – Litany P. 150 – Mode 5

Resp. sung Ben. Ant. p. 388

Ben. C – Mode 6a

MON: (1) St. Justin, Mem. p. 7

Inv. Ant. sung, Intoner vs. Ps. 95 SML

Hymn: BB 463 "The Lord Is My Light"

P. 64 – Mode 1a P. 90 – Mode 2a

Canticle – Recite P. 146 – Mode 5a

Resp. sung Ben. Ant.

Ben. A – Mode 6a

TUES: (2) Weekday p. 13

Inv./Hymn: #3 "As Daylight Fills the Morning..." TB

P. 28 – Mode 1a P. 86 – Intoner/All

Canticle – Mode 5a P. 147a – Mode 6a

Resp. sung Ben. Ant.

Ben. B – Mode 8a

WED: (3) St. Charles Lwanga & Comp., Mem. p. 19

Inv./Hymn: #4 "As Morning Breaks From Night" SCB

P. 8 – Mode 6 P. 65 – Mode 5a

Canticle – Recite P. 48 – Mode 7

Resp. sung Ben. Ant.

Ben. D – Mode 8

THU: (4) Weekday p. 25

Inv./Hymn: BB 435 "God, Beyond All..." Str/SAL

P. 3 – Mode 1 P. 80 – Intoner/All

Canticle – Recite P. 47 – Mode 5

Resp. sung Ben. Ant.

Ben: Sheet (Janco)

FRI: (5) St. Boniface, Mem. p. 31

Inv./Hymn: BB 388 "The Summons" STG

P. 85 – Intoner/All P. 51 – Mode 1a

Canticle – Recite P. 99 – Mode 8a

Resp. sung Ben. Ant.

Ben: F

SAT: (6) Weekday p. 37

Inv./Hymn: #8 "How Beautiful the Light" SRW

P. 81 – Intoner/All P. 58 – Mode 2a

Canticle – Recite P. 98 – Mode 6

Resp. sung Ben. Ant.

Ben: E

The Prayer

Leader SAT: (30) The Most Holy Trinity, Sol. F'day Bk. p. 377
introduces Hymn: BB 707 "All Hail, Adored Trinity" SKM
the Ben. Ant., Ps. 113 – Mode 5 Ps. 114 – Mode 4
Mag. Ant., Ps. 145 – Mode 7 Canticle – Mode 1
and the Gospel: Jn. 3:16-18 Reflection: Sr. Jeana Visel
"Our Father" Resp. sung Mag. Ant. p. 383
in the absence of the Mag. D – Mode 1a "Salve Regina"

EVENING PRAYER

SUN: (31) The Most Holy Trinity F'day Bk. p. 389

Inv./Hymn: BB 708 "Come Now, Almighty King" SKM

P. 110 – Mode 5 P. 111 – Mode 4

P. 138 – Mode 7 Canticle – Recite

Resp. sung Mag. Ant. p. 394

Mag. B – Mode 4a "Salve Regina"

MON: (1) St. Justin, Mem. p. 10

Inv./Hymn: BB 574 "O Bless The Lord" SML

P. 135 – Intoner/All P. 137 – Mode 1a

P. 120 – Mode 2a Canticle – Mode 5a

Resp. sung Mag. Ant.

Mag. A – Mode 6a "Hail, Holy Queen"

TUES: (2) Weekday p. 16

Hymn: BB 630 "Abide With Me" SDM

P. 22a – Recite P. 22b – Mode 6a

P. 134 – Mode 1a Canticle – Mode 7

Resp. sung Mag. Ant.

Mag. C – Mode 5

WED: (3) St. Charles Lwanga & Comp., Mem. p. 21

Hymn: BB 219 "God, We Praise You" SCB

P. 56 – Intoner/All P. 70 – Mode 1a

Canticle – Mode 8a

Resp. sung Mag. Ant.

Mag. E – Mode 6 Padre Nuestro

THU: (4) Weekday p. 24

Hymn: G 744 "As a Fire is Meant for..." Str/SAL

P. 35a – Intone/All P. 35b – Mode 1a

P. 62 – Mode 6a Canticle: G 709 "Not for..."

Resp. sung Mag. Ant.

Mag: G 100 "Luke 1:46-53: My Soul Gives Glory"

FRI: (5) St. Boniface, Mem. p. 30

Hymn: BB 391 "All That We Have Seen" STG

P. 38 – Recite P. 46 – Mode 6

P. 75 – Intoner/All Canticle – Mode 8a

Resp. sung Mag. Ant.

Mag: K

Saturday:
Blessing
of
weekend
servers

MASS CALENDAR
May 31 - June 6, 2026
Cycle A – Year II

Presider: Fr. Julian

SUN: (31) The Most Holy Trinity L 164
Ent: BB 704 “All Praise and Glad Thanksgiving” SKM
Glo: BB 894 (Mass of Christ the Savior)
Resp. Ant. sung, BB p. 166, Schola verses
“Glory and praise forever”

G. Accl: BB 895, Schola verse
Gospel, Homily, Nicene Creed
Prayer of the Faithful, Pres. of Gifts
Prep. of Gifts: Instrumental
Holy & Serv. Music: BB 897, 899, 901, 902
Com: BB 375 “See Us, Lord, About Your Altar”

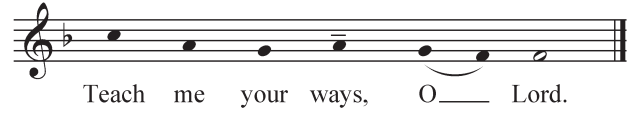
Presider: Fr. Sean

TUE: (2) Weekday L 354
Ent: BB 311 “As We Gather at Your Table” TB
Resp. Ant. sung, BB 773, Prayer Leader verses
“In every age, O Lord, you have been our refuge,
you have been our refuge.”

G. Acc: BB 905, omit verse (Mass of Spirit and Grace)
Holy & Serv. Music: BB 907, 909, 911, 912
Com: BB 342 “Behold the Lamb”

Presider: Eugene

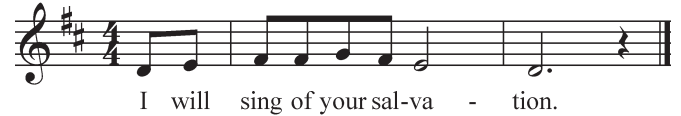
THU: (4) Weekday L 356
Ent: BB 398 “Ubi Caritas” (Rosania) Str/SAL
Resp. Ant. sung, Prayer Leader verses



G. Accl: BB 895, omit verse (Mass of Christ the Savior)
Holy & Service Music: BB 897, 899, 901
Lamb: Recite (Prayer Leader intones)
Com: BB. 402 “Love Goes On”

Presider: Jeremy

Sat: (6) Weekday L 358
Ent: BB 308 “In This Place” (vs. 1, 4) SRW
Resp. Ant. sung, Prayer Leader verses



G. Acc: BB 856, omit verse (Mass of Renewal)
Holy & Serv. Music: BB 858, 860, 862
Lamb: Recite (Prayer Leader intones)
Com: BB 332 “Taste and See” (Hurd)