

**WEEK 7 Easter***Choir, Right*

Prayer Leader: Srs. Joan Scheller/Doris Schepers

Reader: Srs. Gail Hamilton/Rebecca Abel

Intoner: Sr. Jean Marie Ballard

**MORNING PRAYER**

SUN: (17) Ascension, Sol. F'day Bk. p. 324

Inv. Ant. sung, Intoner vs. Ps. 99 SRW

Hymn: BB 196 "Go Make of All Disciples"

Ps. 93 – Mode 8 Ps. 119 – Recite

Canticle – Mode 8a Ps. 150 – Mode 1a

Resp. sung Ben. Ant. – p. 329

Ben. C – Mode 7

MON: (18) Easter Weekday p. 244

Inv. Ant. sung. Intoner vs. Ps. 100 SML

Hymn: BB 608 "Let Heaven Rejoice" (vs. 2, 3)

Ps. 90 – Recite Ps. 101 – Mode 1a

Canticle – Mode 5a Ps. 29 – Mode 6a

Resp. sung Ben. Ant.

Ben. C – Mode 8a

TUES: (19) Easter Weekday p. 256

Inv./Hymn: #12 "Eternal Monarch, King..." TB

Ps. 5 – Mode 6a Ps. 28 – Mode 1a

Canticle – Mode 5a Ps. 33 – Intoner/All

Resp. sung Ben. Ant. sung

Ben. C – Mode 8a

WED: (20) Easter Weekday p. 268

Inv./Hymn: BB 174 "Hallelujah Is Our Song" Str/STG

Ps. 36 – Mode 1 Ps. 88 – Mode 5

Canticle – Recite Ps. 146 – Mode 7

Resp. sung Ben. Ant.

Ben: BB 804 "Luke 1: Benedictus" (Farrell)

THU: (21) Easter Weekday p. 279

Inv. Ant. sung, Intoner vs. Ps. 95 SKM

Hymn: #5 "Sing Gently, O Earth"

Ps. 143 – Intoner/All Ps. 76 – Mode 6

Canticle – Recite Ps. 147a – Mode 8

Resp. sung Ben. Ant.

Ben. A – Mode 5a

FRI: (22) Easter Weekday p. 290

Inv./Hymn: BB 559 "Thanks Be..." (vs. 1-3, 5) SSA

Ps. 3 – Mode 1 Ps. 74 – Recite

Canticle – Intoner/All Ps. 147b – Mode 6

Resp. sung Ben. Ant.

Ben. D – Mode 8

SAT: (23) Easter Weekday (Silver Jubilee) p. 399

Inv./Hymn: Sheet "Listen With the Ear..." Str/STG

Ps. 84 – Mode 6a Ps. 92 – Intoner/All

Canticle: BB 428 "These Alone Are Enough"

Ps. 149 – Mode 8a

Resp. sung Ben. Ant.

Ben: TMH p. 5 "Benedictus"

**EVENING PRAYER**

The Prayer Leader introduces the Ben. Ant., Mag. Ant., and the "Our Father" in the absence of the Prioress and Sub-Prioress.

SAT: (16) Ascension, Sol. F'day Bk. p. 317

Hymn: G 546 "Go to the World!" SRW

Ps. 113 – Mode 7a Ps. 116b-117 – Intoner/All

Ps. 138 – Mode 7 Canticle – Mode 2a

Gospel: Mt. 28:16-20 Reflection: Sr. Anita Louise

Resp. sung. Mag. Ant. – p. 323

Mag. B – Mode 6 "Regina Coeli"

SUN: (17) Ascension, Sol. F'day Bk. p. 330

Hymn: Sheet "Sing We Triumphant" SRW

Ps. 110 – Mode 7 Ps. 111 – Mode 4

Ps. 46 – Intoner/All Canticle – Mode 2

Resp. sung Mag. Ant. – p. 336

Mag. D – Mode 2a "Regina Coeli"

MON: (18) Easter Weekday p. 250

Hymn: BB 412 "Send Us Your Spirit" SML

Ps. 133 – Mode 5a Ps. 134 – Mode 6a

Ps. 136 – Litany Canticle – Mode 8a

Resp. sung Mag. Ant.

Mag. C – Mode 5a "O Queen of Heaven"

TUES: (19) Easter Weekday p. 262

Hymn: BB 651 "O Breathe on Me, O Breath..." SDM

Ps. 31a – Recite Ps. 31b – Mode 6a

Ps. 13 – Mode 1a Canticle – Mode 7

Resp. sung Mag. Ant.

Mag. B – Mode 5a

WED: (20) Easter Weekday p. 274

Hymn: BB 185 "Alleluia! He Is Risen" Str/STG

Ps. 139 – Recite Ps. 140 – Intoner/All

Canticle: BB 402 "Love Goes On"

Resp. sung Mag. Ant.

Mag: E Padre Nuestro

THU: (21) Easter Weekday p. 285

Hymn: G 555 "Spirit Blowing through Creation" SKM

Ps. 19a – Mode 6 Ps. 19b – Mode 5

Ps. 39 – Intoner/All Canticle – Mode 8a

Resp. sung Mag. Ant.

Mag: G100 "Luke 1:46-53: My Soul Gives Glory"

FRI: (22) Easter Weekday p. 296

Hymn: BB 564 "From All That Dwell..." SSA

Ps. 56 – Mode 1a Ps. 103 – Intoner/All

Ps. 70 – Mode 5 Canticle – Recite

Resp. sung Mag. Ant.

Mag: F

*Saturday:  
Blessing  
of weekend  
servers*

**MASS CALENDAR**

**May 17 - 23, 2026**

**Cycle A - Year II**

*Presider: Fr. Julian*

SUN: (17) Ascension, Sol. L 58

Ent: BB 198 "Hail the Day That Sees Him Rise" SRW

Glo: BB 864 (Mass of Creation)

Resp. sung: Schola Sheet

"God mounts his throne to shouts of joy:  
a blare of trumpets for the Lord."

G. Acc: BB p. 153, Schola Sheet

Gospel, Homily, Apostles Creed,

Prayers of the Faithful, Pres. of Gifts

Prep. of Gifts: Instrumental

Holy & Serv. Music: BB 865, 866, 867, 868

Com: BB 598 "Worthy Is the Lamb"

---

*Presider: Fr. Sean*

TUE: (19) Easter Weekday L 298

Ent: BB 203 "Creator Spirit, by Whose Aid" TB

Resp. Ant. sung, Prayer leader verses



G. Acc: BB 846, omit verse (Mass of the Resurrection)

Holy & Serv. Music: BB 848, 850, 852, 853

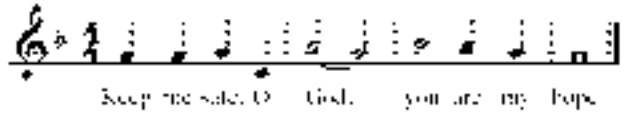
Com: BB 350 "Spirit and Grace"

*Presider: Fr. Julian*

THU: (21) Easter Weekday L 300

Ent: BB 542 "One Spirit, One Church" SKM

Resp. Ant. sung, Prayer Leader verses



G. Acc: BB 856, omit verse (Mass of Renewal)

Holy & Serv. Music: BB 858, 860, 862, 863

Com: BB 356 "Ang Katawan ni Kristo..."

---

*Presider: Fr. Jeremy*

SAT: (23) Easter Weekday

JUBILEE - no morning Mass

PROGRAM