

**WEEK 6 Easter***Choir: Left side*

Prayer Leader: Sr. Mary Judith Fleig  
 Reader: Srs. Louise Laroche/Barbara C. Schmitz  
 Intoner: Sr. Agnes Weinzapfel

**MORNING PRAYER**

SUN: (10) Sixth Sunday of Easter p. 157  
 Inv./Hymn: BB 571 "Sing a Joyful Song" Str/SAL  
 Ps. 93 – Mode 6  
 Ps. 63: BB 764 "Psalm 63: My Soul..." Cantor vs.  
 Canticle – Litany Ps. 148 – Mode 7  
 Resp. sung Ben. Ant. – p. 427 (A)  
 Ben. B – Mode 5a

MON: (11) Easter Weekday p. 166  
 Inv./Hymn: BB 433 "All The Earth" (vs. 1, 4, 5) SML  
 Ps. 84: BB 534 "How Lovely Is Your Dwelling Place"  
 Ps. 45 – Recite  
 Canticle – Mode 5a Ps. 96 – Intoner/All  
 Resp. sung Ben. Ant.  
 Ben. A – Mode 6a

TUES: (12) Easter Weekday p. 178  
 Inv/Hymn: BB 432 "Canticle of..." (4 vs.) Str/SAL  
 Ps. 85 – Mode 6 Ps. 2 – Intoner/All  
 Canticle – Recite Ps. 29 – Mode 1  
 Resp. sung Ben. Ant.  
 Ben: Sheet (Janco)

WED: (13) St. Julian of Norwich, Mem. p. 189  
 Inv./Hymn: BB 391 "All That We Have Seen" STG  
 Ps. 86 – Intoner/All Ps. 58 – Mode 5a  
 Canticle – Mode 8a Ps. 98 – Mode 7a  
 Resp. sung Ben. Ant.  
 Ben: E

THU: (14) St. Matthias, Feast F'day Bk. p. 355  
 Inv. Ant. sung, Intoner vs. Psalm 95 SRW  
 Hymn: #9 "Come, O Friends In Joyful Measure"  
 Ps. 75 – Mode 5 Ps. 96 – Mode 6a  
 Canticle – Recite Ps. 148 – Mode 8  
 Resp. sung Ben. Ant. p. 360  
 Ben. C – Mode 7

FRI: (15) St. Pachomius, Mem. p. 211  
 Inv./Hymn: Sheet "Sing Out Earth and Skies" STG  
 Ps. 18a – Recite Ps. 18b – Mode 5a  
 Canticle – Solo Ps. 48 – Mode 6  
 Resp. sung Ben. Ant.  
 Ben. D – Mode 7

SAT: (16) Easter Weekday p. 224 *Saturday:*  
 Inv./Hymn: BB 649 "River of Glory" SSA *Blessing of*  
 Ps. 81 – Mode 1a Ps. 73 – Intoner/All *weekend*  
 Canticle – Recite Ps. 47 – Mode 6 *servers*  
 Resp. sung Ben. Ant.  
 Ben. D – Mode 7

**EVENING PRAYER**

The Prayer Leader introduces the Ben. Ant., Mag. Ant., and the "Our Father" in the absence of the Prioress and Sub-Prioress.

SAT: (9) Sixth Sunday of Easter p. 152  
 Hymn: BB 614 "Festival Canticle: Worthy..." SMM  
 Ps. 141 – Mode 2a Ps. 116b-117 – Mode 8  
 Ps. 138 – Mode 6 Canticle – Intoner/All  
 Gospel: Jn. 14:15-21 Reflection: Sr. Jane Becker  
 Resp. sung Mag. Ant. – p. 427 (A)  
 Mag. C – Mode 5 "Regina Coeli"

SUN: (10) Sixth Sunday of Easter p. 162  
 Hymn: BB 181 "Now the Green Blade Rises" Str/SAL  
 Ps. 110 – Mode 6a Ps. 111 – Mode 8  
 Ps. 113 – Mode 1a  
 Canticle – Intoner verses, BB 895 "Alleluia" refrain  
 Resp. sung Mag. Ant. – p. 427 (A)  
 Mag. B – Mode 5a "Regina Coeli"

MON: (11) Easter Weekday p. 173  
 Hymn: BB 434 "I Sing the Mighty Power..." SML  
 Ps. 123 – Mode 1a Ps. 124 – Mode 2a  
 Ps. 59 – Intoner/All Canticle – Mode 5a  
 Resp. sung Mag. Ant.  
 Mag. A – Mode 6a "O Queen of Heaven"

TUES: (12) Easter Weekday p. 184  
 Hymn: Sheet "Joyful is the Dark" Str/SAL  
 Ps. 125 – Recite Ps. 129 – Mode 6a  
 Ps. 135 – Intoner/All Canticle – Mode G 708 "Set..."  
 Resp. sung Mag. Ant.  
 Mag: G 100 "Luke 1:46-53: My Soul Gives Glory"

WED: (13) St. Julian of Norwich, Mem. p. 195  
 Hymn: BB 714 "Saints and Beloved of God" STG  
 Ps. 120 – Mode 1a Ps. 50 – Intoner/All  
 Ps. 127 – Mode 6a Canticle – 5a  
 Resp. sung Mag. Ant.  
 Mag: F *Padre Nuestro*

THURS: (14) St. Matthias, Feast F'day Bk. p. 361  
 Hymn: #10 "Let All the World With Songs..." SRW  
 Ps. 130 – Mode 1a Ps. 97 – Mode 8a  
 Ps. 126 – Mode 6a Canticle – Intoner/All  
 Resp. sung Mag. Ant. p. 365  
 Mag. E – Mode 7a

FRI: (15) St. Pachomius, Mem. p. 219  
 Hymn: BB 563 "O God Beyond All Praising" SSA  
 Ps. 35a – Intoner/All Ps. 35b – Mode 6a  
 Ps. 131 – Recite Canticle – Mode 8a  
 Resp. sung Mag. Ant.  
 Mag. A – Mode 7

**MASS CALENDAR**  
**May 10 - 16, 2026**  
**Cycle A - Year II**

*Presider: Fr. Eugene*

SUN: (10) Sixth Sunday of Easter L 55  
Ent: BB 672 "Healing River of the Spirit" Str/SAL  
Glo: BB 894 "Mass of Christ the Savior"  
Resp. sung: BB p. 150, Cantor verses  
"Let all the earth cry out to God with joy."

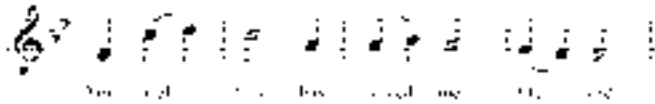
G. Acc: BB p. 151, Cantor verse  
Gospel, Homily, Apostles Creed,  
Prayer of the Faithful, Pres. of Gifts  
Prep. of Gifts:  
Holy & Serv. Music: BB 897, 899, 901, 902  
Com: BB 735 "Psalm 19: Your Words, Lord Are..."

---

*Presider: Fr. Sean*

TUE: (12) Easter Weekday L 292  
Ent: BB 650 "Flow River Flow" Str/SAL

Resp. Ant. sung, Prayer Leader verses



G. Acc: BB 905, omit verse (Mass of Spirit and Grace)  
Holy & Serv. Music: BB 907, 909, 911  
Lamb: Recite (Prayer Leader intones)  
Com: BB 329 "Bread for the World"

*Presider: Fr. Eugene*

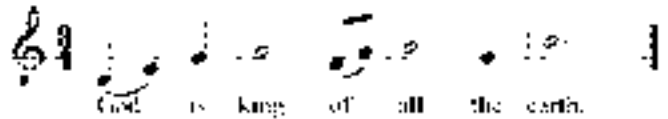
THU: (14) St. Matthias, Feast L 564  
Ent: BB 500 "Come, Follow Me" SRW  
Glo: BB 845 (Mass of the Resurrection)  
Resp. Ant. sung, Schola Sheet  
"The Lord will give him a seat with the leaders  
of the people."

G. Acc: BB 846, omit verse  
Holy & Serv. Music: BB 848, 850, 852, 853  
Com: BB 508 "The Eyes and Hands of Christ"

---

*Presider: Fr. Jeremy*

SAT: (16) Easter Weekday L 296  
Ent: BB 573 "Come, Christians, Join to Sing" SSA  
Resp. Ant. sung, Prayer Leader verses



G. Acc: BB p. 153, omit verse  
Holy & Serv. Music: BB 871, 873, 875 (Heritage Mass)  
Lamb: Recite (Prayer Leader intones)  
Com: BB 348 "God's Holy Gifts"