

WEEK 4 Easter*Choir: Left side*

Prayer Leader: Sr. Kathryn Huber
 Reader: Srs. Ann Marie Howard/Robin Lynn Evans
 Intoner: Sr. Jean Marie Ballard

MORNING PRAYER

SUN: (26) 4th Sunday of Easter p. 236
 Inv./Hymn: BB 174 "Hallelujah Is Our Song" STG
 Ps. 119 – Mode 1 Ps. 108 – Mode 7
 Canticle – Litany Ps. 150 – Mode 6
 Resp. sung Ben. Ant. – p. 424 (A)
 Ben. C – Mode 5

MON: (27) Easter Weekday p. 244
 Inv./Hymn: BB 569 "Sing A New Song" Str/SAL
 Ps. 90 – Intoner/All Ps. 101 – Mode 6
 Canticle – Recite Ps. 29 – Mode 8
 Resp. sung Ben. Ant.
 Ben: Sheet - Janco

TUES: (28) Easter Weekday p. 256
 Inv./Hymn: BB 578 "Praise, My Soul..." TB
 Ps. 5 – Mode 6 Ps. 28 – Mode 1a
 Canticle – Mode 5a Ps. 33 – Intoner/All
 Resp. sung Ben. Ant. sung
 Ben. B – Mode 8a

WED: (29) Catherine of Siena, Mem. p. 268
 Inv./Hymn: BB 649 "River of Glory" SSA
 Ps. 36 – Recite Ps. 88 – Mode 1a
 Canticle – Recite Ps. 146 – Mode 8a
 Resp. sung Ben. Ant.
 Ben. D – Mode 6

THU: (30) Easter Weekday p. 279
 Inv. Ant. sung, Prayer Leader vs. Ps. 95 SML
 Hymn: BB 645 "We Belong to You" (vs. 1, 4)
 Ps. 143 – Mode 1a Ps. 76 – Mode 5a
 Canticle – Recite Ps. 147a – Mode 6a
 Resp. sung Ben. Ant.
 Ben. A – Mode 8a

FRI: (1) St. Joseph the Worker, Mem. p. 290
 Inv./Hymn: BB 171 "Christ, the Lord, Is..." SKM
 Ps. 3 – Mode 1 Ps. 74 – Intoner/All
 Canticle – Mode 5a Ps. 147b – Mode 8
 Resp. sung Ben. Ant.
 Ben. B – Mode 6

SAT: (2) St. Athanasius, Mem. p. 301
 Inv./Hymn: BB 613 "This Day Was Made..." SRW
 Ps. 119 – Mode 6 Ps. 94 – Intoner/All
 Canticle – Recite Ps. 8 – Mode 8
 Resp. sung Ben. Ant.
 Ben.: E

EVENING PRAYER

The Prayer Leader introduces the Ben. Ant., Mag. Ant., and the "Our Father" in the absence of the Prioress and Sub-Prioress. SAT: (25) 4th Sunday of Easter p. 231
 Hymn: BB 519 "The King..." (vs. 1, 2, 5, 6) SRW
 Ps. 122 – Mode 6a Ps. 145 – Intoner/All
 Ps. 130 – Mode 1a Canticle – Sheet 101S
 Gospel: Jn. 10:1-10 Reflection: Sr. Sarah Cathleen
 Resp. sung Mag. Ant. – p. 424 (A)
 Mag. B – Mode 5a "Regina Coeli"

SUN: (26) 4th Sunday of Easter p. 240
 Hymn: #4 "Sing You Faithful, the New Song" SKM
 Ps. 114 – Mode 1 Ps. 23 – Mode 6
 Ps. 112 – Mode 7 Canticle – Schola Card
 Resp. sung Mag. Ant. – p. 424 (A)
 Mag. A – Mode 5 "Regina Coeli"

MON: (27) Easter Weekday p. 250
 Hymn: BB 562 "Sing, O Sing" Str/SAL
 Ps. 133 – Recite Ps. 134 – Mode 5a
 Ps. 136 – Litany Canticle – Sheet "Nothing..."
 Resp. sung Mag. Ant.
 Mag.: BB 805 "Luke 1: Magnificat" (Farrell)
 "O Queen of Heaven"

TUES: (28) Easter Weekday p. 262
 Hymn: BB 179 "Christ, the Lord, Is Risen..." SCB
 Ps. 31a – Mode 1a Ps. 31b – Intoner/All
 Ps. 13 – Mode 2 Canticle – Recite
 Resp. sung Mag. Ant. sung
 Mag. C – Mode 6

WED: (29) St. Catherine of Siena, Mem. p. 274
 Hymn: G 519 "Sing to the Mountains" (vs. 1, 3) SRW
 Ps. 139 – Intoner/All Ps. 140 – Mode 1a
 Canticle: G 709 "Not for Tongues of Heaven's Angels"
 Resp. sung Mag. Ant.
 Mag.: G 100 "Luke..." Padre Nuestro

THU: (30) Easter Weekday p. 285
 Burial of Creamains for Sister Diane Fischer
 Hymn: BB 402 "Love Goes On" SML
 Ps. 19a – Mode 5a Ps. 19b – Mode 6a
 Ps. 39 – Intoner/All Canticle – Mode 8a
 Resp. sung Mag. Ant.
 Mag.: F

FRI: (1) St. Joseph, the Worker, Mem. p. 296
 Hymn: BB 177 "At the Lamb's High Feast" SKM
 Ps. 56 – Mode 2 Ps. 103 – Intoner/All
 Ps. 70 – Mode 1 Canticle – Recite
 Resp. sung Mag. Ant.

Mag. B – Mode 6

*Saturday:
 Blessing
 of weekend
 servers*

MASS CALENDAR
April 26 - May 2, 2026
Cycle A - Year II

Presider: Fr. Jeremy

SUN: (26) 4th Sunday of Easter L 49
Ent: BB 191 "Alleluia! Alleluia" STG
Glo: BB 870 (Heritage Mass)
Resp. sung, BB p. 146, Schola verses
"The Lord is my shepherd; there is nothing I shall want."

G. Acc: BB p. 147, Schola verse
Gospel, Homily, Apostles Creed,
Prayers of the Faithful, Pres. of Gifts
Prep. of Gifts: Instrumental
Holy & Serv. Music: BB 871, 873, 875, 876
Com: BB 328 "Bread of Life" (Farrell)

Presider: Fr. Eugene

TUE: (28) Easter Weekday L 280
Ent: BB 568 "All Creatures of Our..." (3 vs.) TB
Resp. sung, Prayer Leader verses



G. Acc: BB 895, omit verse
(Mass of Christ the Savior)
Holy & Serv. Music: BB 897, 899, 901, 902
Com: BB 348 "God's Holy Gifts"

Presider: Fr. Julian

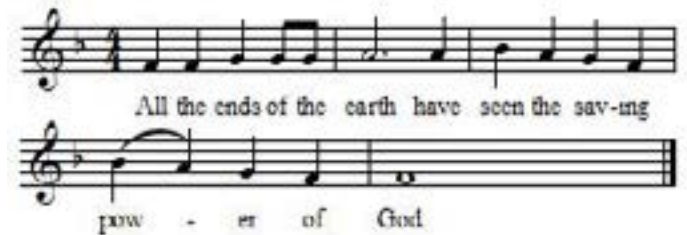
THU: (30) Easter Weekday L282
Ent: BB 190 "Jesus Is Risen" (vs. 1, 3) SML
Resp. Ant. sung, Prayer Leader verses



G. Acc: BB 856 (Mass of Renewal)
Holy & Serv. Music: BB 858, 859, 862, 863
Com: BB 598 "Worthy Is the Lamb"

Presider: Fr.

SAT: (2) St. Athanasius, Mem. L 284
Ent: BB 482 "We Walk by Faith" SRW
Resp. Ant. sung, Prayer Leader verses



G. Acc: BB 927, omit verse (Celtic)
Holy & Serv. Music: BB 865, 866, 867
(Mass of Creation)
Lamb: Recite (Prayer Leader intones)
Com: BB 486 "We Remember"