

WEEK 2 Easter*Choir: left side*

Prayer Leader: Sr. Mary Lou Dick

Reader: Sr. Roxanne Higgins

Intoner: Sr. Sharon Hollander

MORNING PRAYER

SUN: (12) Second Sunday of Easter p. 78

Inv./Hymn: BB 166 "Come, Ye Faithful..." SDM

Ps. 118 – Intoner/All Ps. 1 – Mode 1

Canticle – 7a

Resp. sung Ben. Ant. – p. 421 (A)

Ben. C – Mode 8

MON: (13) Easter Weekday p. 89

Inv. Ant. sung. Intoner vs. Ps. 100 SML

Hymn: BB 571 "Sing A Joyful Song" (vs. 1, 4)

Ps. 25 – Recite Ps. 82 – Mode 5a

Canticle – Mode 6a Ps. 146 – Mode 8a

Resp. sung Ben. Ant.

Ben. A – Mode 5a

TUES: (14) Easter Weekday p. 101

Inv./Hymn: #6 "Christ Is Risen" TB

Ps. 43 – Mode 2 Ps. 33 – Intoner/All

Canticle – Mode 5 Ps. 147a – Mode 7a

Resp. sung Ben. Ant.

Ben. E

WED: (15) Easter Weekday p. 112

Inv./Hymn: BB 187 "Alleluia! Love is Alive" Str/STG

Ps. 77 – Intoner/All Ps. 71 – Mode 5a

Canticle – Recite Ps. 97 – Mode 8a

Resp. sung Ben. Ant.

Ben: BB 804 "Luke 1: Benedictus:" (Farrell)

THURS: (16) Easter Weekday p. 125

Inv./Hymn: BB 463 "The Lord is My Light" SKM

Ps. 80 – Intoner/All Ps. 65 – Mode 6

Canticle – Recite Ps. 149 – Mode 8

Resp. sung Ben. Ant.

Ben. B – Mode 7

FRI: (17) Easter Weekday p. 136

Inv./Hymn: BB 176 "Alleluia! Alleluia! Let..." SSA

Ps. 3 – Mode 5 Ps. 64 – Mode 5a

Canticle – Solo Ps. 147b – Mode 6

Resp. sung Ben. Ant.

Ben. D – Mode 8

SAT: (18) Easter Weekday p. 146

Inv./Hymn: BB 182 "Two Were Bound..." STG

Ps. 92 – Intoner/All Ps. 36 – Mode 1

Canticle – Recite Ps. 8 – Mode 5

Resp. sung Ben. Ant.

Ben: BB 817 "Gospel Canticle" (Green)

The Prayer

Leader

introduces

the Ben. Ant.,

Mag. Ant.,

and the

"Our Father"

in the absence

of the

Prioress and

Sub-Prioress.

SAT: (11) Second Week of Easter p. 72

Hymn: BB 608 "Let Heaven Rejoice" SRW

Ps. 119 – Mode 5 Ps. 16 – Mode 7

Ps. 66 – Intoner/All Canticle – Mode 6a

Gospel: Jn. 20:19-31 Reflectoin: Sr. Rebecca Abel

Resp. sung Mag. Ant. – p. 421 (A)

Mag. C – Mode 8 "Regina Coeli"

SUN: (12) Second Sunday of Easter p. 84

Hymn: Sheet "Glory In The Cross" SRW

Ps. 115 – Intoner/All Ps. 116a – Mode 5a

Ps. 121 – Mode 6a Canticle – Schola Card

Resp. sung Mag. Ant. – p. 421 (A)

Mag. A – Mode 8a "Regina Coeli"

MON: (13) Easter Weekday p. 95

Hymn: BB 181 "Now The Green Blade Rises" SML

Ps. 12 – Mode 1a Ps. 137 – Mode 2a

Ps. 42: BB 756 "Psalm 42/43: As the Deer Longs"

Canticle – Mode 5a

Resp. sung Mag. Ant.

Mag. C – Mode 8a "O Queen of Heaven"

TUES: (14) Easter Weekday p. 106

Hymn: #8 "Eternal Light" SCB

Ps. 49a – Mode 4 Ps. 49b – Mode 2

Ps. 4 – Recite Canticle – Mode 5a

Resp. sung Mag. Ant.

Mag. A – Mode 7

WED: (15) Easter Weekday p. 119

Hymn: BB 185 "Alleluia! He is Risen" Str/STG

Ps. 6 – Recite Ps. 142 – Mode 5a

Ps. 144 – Intoner/All Canticle: BB 402 "Love..."

Resp. sung Mag. Ant.

Mag: BB 824 "Gospel Canticle"

Padre Nuestro

THURS: (16) Easter Weekday p. 131

Hymn: BB 172 "Christ, The Lord..." (3 vs.) SKM

Ps. 37a – Intoner/All Ps. 37b – Mode 1a

Ps. 37c – Mode 2a Canticle – Recite

Resp. sung Mag. Ant.

Mag. B – Mode 8

FRI: (17) Easter Weekday p. 141

Hymn: BB 610 "Alleluia No. 1" SSA

Ps. 52 – Mode 1 Ps. 44 – Intoner/All

Canticle – Mode 8a

Resp. sung Mag. Ant.

Mag. C – Mode 6

*Saturday:
Blessing of
weekend
servers*

MASS CALENDAR
April 12 - 18, 2026
Cycle A - Year II

Presider: Fr. Eugene

SUN: (12) Second Sunday of Easter L 43
Ent: BB 606 "Three Days" SDM
Glo: BB BB 894 (Mass of Christ the Savior)
Resp. sung: Schola sheet
"Give thanks to the Lord for he is good,
God's love is everlasting."

G. Acc: BB p. 142, Schola verse
Gospel, Homily, Apostles' Creed
Prayer of the Faithful Pres. of Gifts
Prep. of Gifts: Instrumental
Holy & Serv. Music: BB 897, 899, 901, 902
Com: BB 183 "Ye Sons and Daughters"

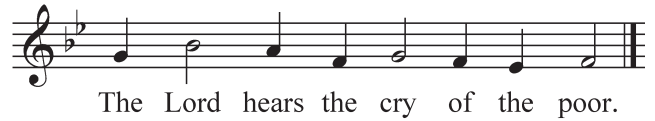
Presider: Fr. Prior Bede

TUE: (14) Easter Weekday L 268
Ent: BB 194 "Good Christians All, Rejoice..." TB
Resp. sung: Schola Sheet
"The Lord is king; he is robed in majesty."

G. Acc: BB 905, omit verse (Mass of Spirit and Grace)
Holy & Serv. Music: BB 907, 909, 911, 912
Com: BB 607 "The Strife is O'er"

Presider: Fr. Sean

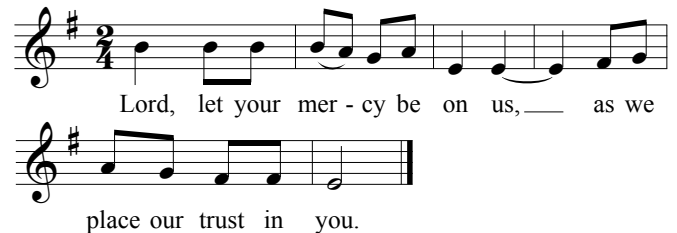
THUR: (16) Easter Weekday L 270
Ent: BB 175 "The Day of Resurrection" (vs. 1, 4) SKM
Resp. sung: Prayer Leader verses



G. Acc: BB 856, omit verse (Mass of Renewal)
Holy & Serv. Music: BB 858, 860, 862, 863
Com: BB 331 "One Love Released"

Presider: Fr. Eugene

SAT: (18) Easter Weekday L 272
Ent: BB 193 "Jesus Christ is Risen Today" STG
Resp. sung: Prayer Leader verses



G. Acc: BB 916, omit verse
(Mass of St. Mary Magdalene)
Holy & Serv. Music: BB 918, 920, 922, 923
Com: BB 374 "Bread of Life"