

LENT WEEK 3*Choir: Right side*

Prayer Leader: Sr. Jane Becker
 Reader: Sr. Anna Corrine O'Connor
 Intoner: Srs. Betty Drewes/Linda Bittner

MORNING PRAYER

SUN: (23) 3rd Sunday in Lent p. 209
 Inv./Hymn: BB 210 "Humbly, Lord, We..." SDM
 Ps. 3 – Mode 7a Ps. 25 – Intoner/All
 Canticle – Mode 6a Ps. 148 – Mode 5a
 Resp. sung Ben. Ant. p. 412 (C)
 Ben. D – Mode 1a

MON: (24) Oscar Romero, Latin American Martyrs, Mem. p. 220
 Inv. Ant. sung. Intoner vs. Ps. 24 SML
 Hymn: BB 315 "O Love Of God..." (vs. 2, 3)
 Ps. 18a – Recite Ps. 68b – Mode 6a
 Canticle – Mode 1a Ps. 93 – Mode 8a
 Resp. sung Ben. Ant.
 Ben. BB 807 "Luke 1: Benedictus"

TUES: (25) Annunciation, Sol. F'day Bk. p. 285
 Inv. Ant. sung, Intoner vs. Ps. 24 TB
 Hymn: #4 O Light, The News Announced..."
 Ps. 93 – Mode 8a Ps. 8 – Mode 1
 Canticle – Recite Ps. 149 – Mode 1a
 Resp. sung Ben. Ant. p. 290
 Ben. B – Mode 8a

WED: (26) Lent Weekday p. 242
 Inv./Hymn: #10 "Have Mercy, Lord, On Us" SCB
 Ps. 91 – Intoner/All Ps. 60 – Mode 1a
 Canticle – Recite Ps. 64 – Mode 2a
 Resp. sung Ben. Ant.
 Ben. A – Mode 5a

THUR: (27) Lenten Weekday p. 254
 Inv./Hymn: BB 131 "Beyond The Days" Str/STG
 Ps. 76 – Recite Ps. 101 – Mode 1a
 Canticle – Intoner/All Ps. 84 – Mode 6a
 Resp. sung Ben. Ant.
 Ben. BB 820 "Gospel Canticle"

FRI: (28) Lenten Weekday p. 265
 Inv./Hymn: BB 134 "Save Your People" SSA
 Ps. 105a – Intoner/All Ps. 105b – Mode 1a
 Canticle – Recite Ps. 147b – Mode 6
 Resp. sung Ben. Ant.
 Ben. D – Mode 8

SAT: (29) Lenten Weekday p. 275
 Inv./Hymn: #8 "Repent And Turn To Me" SRW
 Ps. 107b – Intoner/All Ps. 107c – Mode 1
 Canticle – Recite Ps. 47 – Mode 6
 Resp. sung Ben. Ant.
 Ben. C – Mode 8

EVENING PRAYER

The Prayer Leader introduces the Ben. Ant., Mag. Ant., and the "Our Father" in the absence of the Prioress and Sub-Prioress.
 SAT: (22) 3rd Week in Lent p. 204
 Hymn: #7 "Most Merciful Creator, Lord" SRW
 Ps. 141 – Mode 2a Ps. 144 – Intoner/All
 Ps. 119 – Mode 1 Canticle – Mode 5a
 Gospel: Lk. 13:1-9 Reflection: Sr. Celeste
 Resp. sung Mag. Ant. p. 412 (C)
 Mag. B – Mode 1a "Ave Regina"

SUN: (23) 3rd Sunday in Lent p. 214
 Hymn: G 475 "Tree Of Life" SKM
 Ps. 116a – Mode 6 Ps. 120 – Mode 4
 Ps. 135 – Intoner/All Canticle – Mode 1a
 Resp. sung Mag. Ant. p. 412 (C)
 Mag. B – Mode 1 "Ave Regina"

MON: (24) Annunciation, Sol. F'day Bk. p. 279
 Hymn: BB 684 "Hail Mary: Gentle Woman" SML
 Ps. 110 – Mode 8a Ps. 19a – Mode 1a
 Ps. 48 – Recite Canticle – Mode 8a
 Gospel: Lk. 1:26-38 Reflection: Sr. Anita Louise
 Resp. sung Mag. Ant. p. 284
 Mag. C – Mode 8 "We Salute You"

TUES: (25) Annunciation, Sol. F'day Bk. p. 291
 Hymn: Sheet "Holy Mary, Revealing..." (2 vs.) SRW
 Ps. 113 – Mode 8a Ps. 122 – Mode 1a
 Ps. 127 – Mode 8 Canticle – Intoner/All
 Resp. sung Mag. Ant. p. 296
 Mag. B – Mode 7

WED: (26) Lenten Weekday p. 248
 Hymn: #6 "O Love, How Deep" SCB
 Ps. 55a – Mode 2 Ps. 55b – Recite
 Ps. 115 – Intoner/All Canticle – Mode 8a
 Resp. sung Mag. Ant.
 Mag. A – Mode 5a Padre Nuestro

THUR: (27) Lenten Weekday p. 259
 Hymn: BB 130 "Led By The Spirit" Str/STG
 Ps. 35a – Intoner/All Ps. 35b – Mode 1a
 Ps. 92 – Mode 6a Canticle – Recite
 Resp. sung Mag. Ant.
 Mag. BB 827 "Gospel Canticle"

FRI: (28) Lenten Weekday p. 271
 Hymn: BB 135 "In These Days" (vs. 3, 4) SSA
 Ps. 22a – Intoner/All Ps. 22b – Mode 5a
 Ps. 134 – Recite Canticle – Mode 6a
 Resp. sung Mag. Ant.
 Mag. B – Mode 8

*Blessing
 of
 weekend
 servers*

MASS CALENDAR
March 23 - 29, 2025
Cycle C – Year I

Presider: Fr. Jeremy

SUN: (23) 3rd Sunday of Lent
Ent: BB 458 “I Heard The Voice Of Jesus”

L 30
SDM

Resp. sung: BB p. 86, Schola Sheet
“The Lord is kind and merciful.”

G. Acc: BB p. 87, Schola Sheet
Gospel, Homily, Apostles’ Creed
Prayer of the Faithful, Pres. of Gifts
Holy & Serv. Music: BB 868, 869, 870, 871
(Mass Of Creation)
Com: BB 652 “Remember Your Love”

Presider: Fr. Eugene

TUES: (25) Anunciation, Sol.
Ent: BB 695 “Song Of Mary” (3 vs.)
Glo: BB 907 (Mass Of Spirit And Grace)
Resp. sung: Schola Book R-3, B verses
“Here I am, Lord; I come to do your will.”

L 545
TB

G. Acc: BB 909, omit verse
Holy & Serv. Music: BB 910, 912, 914, 915
Com: BB 342 “Behold The Lamb”

Presider: Fr. Prior Bede

THUR: (27) Lenten Weekday
Ent: BB 120 “Ashes”

L 240
Str/STG

Resp. sung: Prayer Leader verses

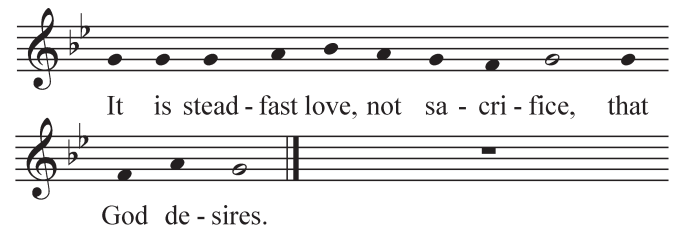


G. Acc: BB 860, omit verse (Mass Of Renewal)
Holy & Serv. Music: BB 861, 863, 865, 866
Com: BB 424 “Love Goes On”

Presider: Fr. Julian

SAT: (29) Lenten Weekday
Ent: Lent Antiphons Bk. p. 12 - 22A
Resp. sung: Prayer Leader verses

L 242
SRW



G. Acc: BB 920, omit verse
(Mass Of St. Mary Magdalene)
Holy & Serv. Music: BB 921, 923, 925, 926
Com: Lent Antiphones Bk. p. 12 - 22B