

**ADVENT WEEK 2***Choir, left side*

Prayer Leader: Sr. Jane Becker  
 Reader: Srs. Barbara C. Schmitz/Louise Laroche  
 Intoner: Srs. Betty Drewes/Linda Bittner

**MORNING PRAYER**

SUN: (8) Second Sunday of Advent p. 86  
 Inv./Hymn: BB 58 "Emmanuel" Str/STG  
 Ps. 29 – Mode 6 Ps. 108 – Intoner/All  
 Canticle – Mode 7 Ps. 8 – Mode 8  
 Resp. sung Ben. Ant. – p. 472 (B and C)  
 Ben. C – Mode 5a

MON:(9) Immaculate Conception, Sol. F'day Bk. p. 17  
 Inv. Ant. sung. Intoner vs. Ps. 67 SRW  
 Hymn: #6 "The God Whom Earth And Sea And Sky"  
 Ps. 19a – Mode 1a Ps. 46 – Mode 8a  
 Canticle – Intoner/All Ps. 8 – Mode 7a  
 Resp. sung Ben. Ant. p. 24  
 Ben. D – Mode 3

TUE: (10) Advent Weekday p. 104  
 Inv./Hymn: #5 "Light-Bearing Christ" TB  
 Ps. 76 – Intoner/All Psalm 87 – Mode 5  
 Canticle – Recite Psalm 149 – Mode 8a  
 Resp. sung Ben. Ant.  
 Ben. C – Mode 6a

WED: (11) Advent Weekday p. 114  
 Inv./Hymn: B 66 "Come, Lord! Marantha" Str/SAL  
 Ps. 45 – Intoner/All  
 Ps. 84 BB 668 "How Lovely Is Your Dwelling Place"  
 Canticle – Mode 8a Ps. 150 – Mode 5  
 Resp. sung Ben. Ant.  
 Ben. BB 807 "Luke 1: Benedictus" (Farrell)

THU (12) Our Lady of Guadalupe, Feast F'day Bk. p. 31  
 Inv./Hymn: BB 691 "On This Day, O Beatiful..." SML  
 Ps. 45 – Mode 5a Ps. 8 – Mode 6a  
 Canticle – Recite Ps. 146 – Mode 8a  
 Resp. sung Ben. Ant. p. 36  
 Ben. A – Mode 7a

FRI: (13) St. Lucy, Mem. p. 137  
 Inv./Hymn: BB 47 "The King Shall Come" SSA  
 Ps. 57 – Intoner/All Ps. 93 – Mode 5a  
 Canticle – Recite Ps. 99 – Mode 8a  
 Resp. sung Ben. Ant.  
 Ben. F

SAT: (14) St. John of the Cross, Mem. p. 147  
 Inv. Ant. sung, Intoner vs. Ps. 67 SKM  
 Hymn: #4 "Hark! A Thrilling Voice Is Sounding"  
 Ps. 3 – Mode 1a Ps. 100 – Mode 6  
 Canticle – Recite Ps. 147a – Mode 5a  
 Resp. sung Ben. Ant.  
 Ben. B – Mode 8a

## The Prayer

Leader  
 introduces  
 the Ben. Ant.,  
 Mag. Ant.,  
 and the  
 "Our Father"  
 in the absence  
 of the  
 Prioress and  
 Sub-Prioress.  
 Thank You!

*Saturday:  
 Blessing  
 of weekend  
 servers*

**EVENING PRAYER**

SAT: (7) Second Week of Advent p. 81  
 Hymn: #2 "Creator Of The Stars Of Night" SKM  
 Ps. 66 – Mode 6 Ps. 116b -117 – Mode 5  
 Ps. 23 – Intoner/All Canticle – Mode 8  
 Gospel: Lk 3:1-6 Reflection: Sr. Sarah  
 Resp. sung Mag. Ant. – p. 471 (A, B, C)  
 Mag. B – Mode 7 "Alma Redemptoris"

SUN: (8) Second Sunday of Advent p. 90  
 Hymn: BB 46 "A Voice Cries Out" Str/STG  
 Ps. 113 – Mode 6a Ps. 114 – Mode 7a  
 Ps. 103 – Intoner/All Canticle – Mode 8a  
 Resp. sung Mag. Ant. – p. 472 (A and C)  
 Mag. B – Mode 1a "Alma Redemptoris"

MON:(9) Immaculate Conception, Sol.  
 NO EVENING PRAYER

TUE: (10) Advent Weekday p. 109  
 Hymn: #1 "As Rain From The Clouds" SRW  
 Ps. 20 - Recite Ps. 61 - Mode 6  
 Ps. 136 - Litany Canticle - Mode 5a  
 Resp. sung Mag. Ant.  
 Mag. C – Mode 8a "O Most Loving Mother"

WED: (11) Advent Weekday p. 120  
 Hymn: G 417 "Warm The Time Of Winter" Str/SAL  
 Ps. 89a – Mode 1 Ps. 89b – Intoner/All  
 Ps. 89c – Mode 6  
 Canticle G 605 "All Glory Is Yours" (Intoner verses)  
 Resp. sung Mag. Ant.  
 Mag. G 100 "Luke 1:46-53: My Soul Gives Glory"  
 Padre Nuestro

THU: (12) Our Lady of Guadalupe, Feast F'day Bk. p. 37  
 Hymn: BB 695 "Song Of Mary" (vs. 1, 5) SML  
 Ps. 111 – Mode 5a Ps. 113 – Mode 6a  
 Ps. 127 – Mode 8a Canticle – Mode 5a  
 Resp. sung Mag. Ant. p. 41  
 Mag. B – Mode 7a

FRI: (13) St. Lucy, Mem. p. 142  
 Hymn: BB 51 "Waiting In Silence" (3 vs.) SSA  
 Ps. 15 – Recite Ps. 16 – Mode 6  
 Ps. 132 – Intoner/All Canticle – Mode 8a  
 Resp. sung Mag. Ant.  
 Mag. B – Mode 7

**MASS CALENDAR**  
**December 8 - 14, 2024**  
**Cycle C - Year 1**

*Presider: Fr. Sean*

SUN: (8) Second Sunday of Advent L 6  
Ent: BB 50 "Let The Valleys Be Raised" Str/STG  
Resp. sung: Schola Sheet  
"The Lord has done great things for us;  
we are filled with joy."

G. Acc: Schola Sheet  
Gospel, Homily, Apostles' Creed,  
Prayer of the Faithful, Pres. of Gifts  
Holy & Serv. Music: BB 921, 923, 925, 926  
(Mass Of St. Mary Magdalene)  
Com: BB 68 "Maranatha"

---

*Presider: Bishop Siegel*

4:30 pm Mass  
MON: (9) Immaculate Conception, Sol. L 689  
Ent: BB 204 "Immaculate Mary" SRW  
Glo: BB 848 (Mass Of The Resurrection)  
Resp. sung: Cantor verses  
"Sing to the Lord a new song for he has done  
marvelous deeds."

G. Acc: BB p. 37, Cantor verse  
Gospel, Homily, Apostles' Creed,  
Prayer of the Faithful, Pres. of Gifts  
Holy & Serv. Music: BB 851, 853, 855, 856  
Com: BB 690 "O Holy Mary"

---

*Presider: Fr. Sean*

TUE: (10) Advent Weekday L 182  
Ent: BB 54 "Savior of the Nations, Come" (3 vs.) TB  
Resp. Ant. sung, Prayer Leader verses



The Lord, our God, comes in strength.

G. Acc: BB 859, omit verse (Mass Of Renewal)  
Holy and Serv. Music: BB 861, 863, 865, 866  
Com: BB 348 "God's Holy Gifts"

*Presider: Fr. Julian*

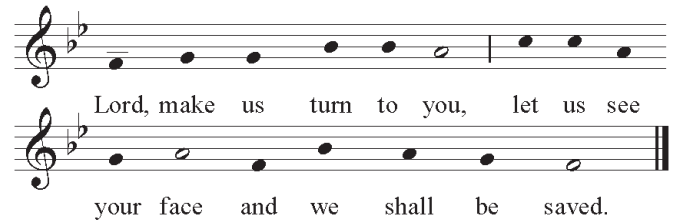
THU: (12) Our Lady of Guadalupe, Feast L690A  
Ent: BB 315 "O Love Of God" (vs 1, 3) SML  
Glo: BB 907 (Mass Of Spirit And Grace)  
Resp. Ant. sung, BB p. 38, Schola Sheet  
"You are the highest honor of our race."

G. Acc: BB p. 39, Schola Sheet  
Holy and Serv. Music: BB 910, 911, 914, 915  
Com: BB 336 "Pan De Vida"

---

*Presider: Fr. Sean*

SAT: (14) St. John of the Cross, Mem. L 186  
Ent: BB 71 "Every Valley" SKM  
Resp. Ant. sung, Prayer Leader verses



G. Acc: BB 898 (Mass Of Christ The Savior)  
Holy and Serv. Music: BB 900, 902, 904, 905  
Com: BB 609 "Like A Shepherd"