

WEEK 1 Ordinary Time*Choir: right side*

Prayer Leader: Srs. Michelle Sinkhorn/Becky Mathauer
 Reader: Srs. Mary Beth Maier/Jayn Elizabeth Lein
 Intoner: Sr. Agnes Weinzapfel

MORNING PRAYER

SUN: (22) 25th Sunday in Ordinary Time p. 1
 Inv./Hymn: BB 387 "The Summons" Str/SAL
 Ps. 118 – Intoner/All Ps. 63 – Mode 6
 Canticle – Mode 8a Ps. 150 – Mode 5
 Resp. sung Ben. Ant. p. 242 (B)
 Ben. C – Mode 1

MON: (23) St. Pius of Pietrelcina, Mem. p. 7
 Inv./Hymn: BB 720 "Saints And Beloved..." Str/STG
 Ps. 64 – Mode 1a Ps. 90 – Recite
 Canticle – Mode 5a Ps. 146 – Mode 6a
 Resp. sung Ben. Ant.
 Ben. BB 827 "Luke 1: Benedictus" (Farrell)

TUES: (24) Weekday p. 13
 Inv./Hymn: #8 "How Beautiful The Light" TB
 Ps. 28 – Mode 1a Ps. 86 – Intoner/All
 Canticle – Mode 5a Ps. 147a – Mode 6a
 Resp. sung Ben. Ant.
 Ben. B – Mode 8a

WED: (25) Weekday p. 19
 Inv./Hymn: #7 "O Christ, Our Teacher" SSA
 Ps. 8 – Mode 6 Ps. 65 – Intoner/All
 Canticle – Recite Ps. 48 – Mode 8
 Resp. sung Ben. Ant.
 Ben. D – Mode 7

THU: (26) Weekday p. 25
 Inv./Hymn: BB 485 "What Wonderous Love" SML
 Ps. 3 – Mode 1A Ps. 80 – Recite
 Canticle – Mode 5A Ps. 47 – Mode 6A
 Resp. sung Ben. Ant.
 Ben. A – Mode 8A

FRI: (27) St. Vincent dePaul, Mem. p. 31
 Inv./Hymn: #12 "The Rising Sun Will Bless..." SRW
 Ps. 85 – Mode 5a Ps. 51 – Intoner/All
 Canticle – Mode 1a Ps. 99 – Recite
 Resp. sung Ben. Ant.
 Ben. E

SAT: (28) St. Lioba, Mem. p. 37
 Inv./Hymn: BB 612 "For The Beauty..." SKM
 Ps. 81 – Intoner/All Ps. 58 – Mode 2a
 Canticle – Recite Ps. 98 – Mode 8a
 Resp. sung Ben. Ant.
 Ben. C – Mode 6

The Prayer

Leader SAT: (21) 25th Sunday in Ordinary Time p. 1
 introduces Hymn: BB 526 "Holy Wisdom, Lamp..." SKM
 the Ben. Ant., Ps. 141 – Mode 5 Ps. 144 – Intoner/All
 Mag. Ant., Ps. 127 – Mode 7 Canticle – Mode 8
 and the Gospel: Mk 9:30-37 Reflection: Sr. Jill
 "Our Father" Resp. sung Mag. Ant. p. 216 (B)
 in the absence of the Mag. D – Mode 1a "Salve Regina"

Prioress and Sub-Prioress. SUN: (22) 25th Sunday in Ordinary Time p. 6
 Hymn: BB 630 "The Road..." (vs. 1, 2, 5, 6) Str/SAL
 Ps. 110 – Mode 1 Ps. 111 – Recite
 Ps. 112 – Mode 7
 Canticle: BB 581 "Worthy Is The Lamb"
 Resp. sung Mag. Ant. p. 216 (B)
 Mag. B – Mode 1 "Salve Regina"

MON: (23) St. Pius of Pietrelcina, Mem. p. 10
 Inv./Hymn: BB 415 "In Christ Alone" Str/STG
 Ps. 135 – Recite Ps. 137 – Intoner/All
 Ps. 120 – Mode 7a Canticle – Mode 5a
 Resp. sung Mag. Ant.
 Mag. BB 693 "Mary's Song"
 "Hail, Holy Queen"

TUES: (24) Weekday p. 16
 Hymn: BB 623 "Tend The Ground" STG
 Ps. 22a – Intoner/All Ps. 22b – Mode 1a
 Ps. 134 – Recite
 Canticle: BB 581 "Worthy Is The Lamb"
 Resp. sung Mag. Ant.
 Mag: BB 826 "Luke 1: Magnificat" (Farrell)

WED: (25) Weekday p. 21
 Hymn: #5 "Evening Hymn" SSA
 Ps. 56 – Recite Ps. 70 – Mode 2
 Canticle – Mode 8a
 Resp. sung Mag. Ant.
 Mag. D – Mode 7 Padre Nuestro

THU: (26) Weekday p. 24
 Hymn: BB 479 "Shelter Me, O God" SML
 Ps. 35a – Recite Ps. 35b – Mode 1A
 Ps. 62 – Intoner/All Canticle – Mode 5A
 Resp. sung Mag. Ant.
 Mag. B – Mode 6A

FRI: (27) St. Vincent dePaul, Mem. p. 30
 Hymn: BB 638 "Abide With Me" SMB
 Ps. 38 – Recite Ps. 46 – Mode 6
 Ps. 75 – Mode 5a Canticle – Mode 8a
 Resp. sung Mag. Ant.
 Mag. A – Mode 7

*Saturday:
 Blessing
 of
 weekend
 servers*

MASS CALENDAR
September 22 - 28, 2024
Cycle B – Year II

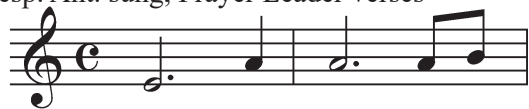
Presider: Fr. Eugene

SUN: (22) 25th Sunday in Ordinary Time L 134
Ent: BB 524 “God Of Mercy” (vs. 1, 4, 5) Str/SAL
Glo: BB 915 (Mass Of Christ The Savior)
Resp. sung: Gather 1165, Cantor verses
“The Lord upholds my life.”

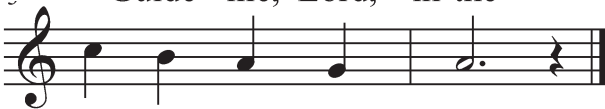
G. Accl: BB p. 209, Cantor verse
Gospel, Homily, Nicene Creed
Prayer of the Faithful, Pres. of Gifts
Prep. of Gifts: Instrumental
Holy & Serv. Music: BB 918, 919, 922, 923
Com: BB 498 “Transfigure Us, O Lord”

Presider: Fr. Prior Bede

TUE: (24) Weekday L 450
Ent: BB 606 “Your Words Are Spirit And...” (2 vs.) TB
Resp. Ant. sung, Prayer Leader verses



Guide me, Lord, in the



way of your com - mands.

G. Acc: BB p. 209, omit verse
Holy & Serv. Music: BB 892, 894, 896, 897
(Heritage Mass)
Com: BB 344 “Gift Of Finest Wheat”

Presider: Fr. Jeremy

THU: (26) Weekday L 452
Ent: BB 309 “Here At This Table” 2 vs SML
Resp. Ant. sung BB 794 “Psalm 90: In Every Age”
P.L. verses

*“In every age, O Lord, you have been our refuge,
you have been our refuge.”*

G. Accl. BB 926 (Mass of Spirit & Grace)
Holy & Service Music: 928, 929, 932, 933
Com: BB 325 “Bread For The World”

Presider: Fr. Eugene

Sat: (28) St. Lioba, Mem. L 454
Ent: BB 671 “Be Still My Soul” SSA
Resp. Ant. sung, Prayer Leader verses.

*In ev'-ry age, O Lord, you have been our
re - fuge.*

G. Acc: BB 916, omit verse (Mass Of Christ The Savior)
Holy & Serv. Music: BB 918, 919, 922, 923
Com: BB 332 “Unless A Grain Of Wheat”