

**WEEK 3 Ordinary Time***Choir: right side*

Prayer Leader: Sr. Mary Judith  
 Reader: Sr. Doris Marie  
 Intoner: Srs. Laura Marie/Mary Carol

**MORNING PRAYER**

SUN: (8) 23<sup>rd</sup> Sunday in Ordinary Time p. 86  
 Inv./Hymn: BB 391 "City Of God" STG  
 Ps. 43 – Mode 1a Ps. 57 – Mode 6  
 Canticle – Litany Ps. 147b – Mode 8  
 Resp. sung Ben. Ant. p. 240 (B)  
 Ben. C – Mode 7

MON: (9) St. Peter Claver, Mem. p. 91  
 Inv. Ant. sung. Intoner vs. Ps. 95 SML  
 Hymn: BB 548 "Sing A Joyful Song" (2 vs.)  
 Ps. 92 – Mode 5a Ps. 143 – Mode 1a  
 Canticle – Recite Ps. 149 – Mode 6a  
 Resp. sung Ben. Ant.  
 Ben. BB 827 "Luke 1: Benedictus" (Farrell)

TUES: (10) Weekday p. 97  
 Inv./Hymn: #3 "As Daylight Fills The..." TB  
 Ps. 48 – Intoner/All Ps. 74 – Mode 1  
 Canticle – Solo Ps. 148 – Mode 6  
 Resp. sung Ben. Ant.  
 Ben. A – Mode 8

WED: (11) Weekday p. 104  
 Inv./Hymn: BB 501 "Come, Follow Me" SSA  
 Ps. 77 – Recite Ps. 87 – Mode 6  
 Canticle – Recite Ps. 147a – Mode 8a  
 Resp. sung Ben. Ant.  
 Ben. C – Mode 8

THUR: (12) Weekday p. 109  
 Inv./Hymn: #10 "The God Of All Grace" Str/SAL  
 Ps. 93 – Mode 6 Ps. 102 – Intoner/All  
 Canticle – Recite Ps. 150 – Mode 7  
 Resp. sung Ben. Ant.  
 Ben. F

FRI: (13) St. John Chrysostom, Mem. p. 116  
 Inv./Hymn: BB 635 "Morning Has Broken" SSA  
 Ps. 68a – Intoner/All Ps. 68b – Mode 6  
 Canticle – Recite Ps. 99 – Mode 8a  
 Resp. sung Ben. Ant.  
 Ben. D – Mode 7

SAT: (14) Exaltation of the Cross, Feast F'day Bk. p. 183  
 Inv./Hymn: BB 713 "Take Up Your Cross" SKM  
 Ps. 93 – Mode 6a Ps. 76 – Mode 5a  
 Canticle – Recite Ps. 150 – Mode 8  
 Resp. sung Ben. Ant. p. 187  
 Ben. C – Mode 1

**EVENING PRAYER**

The Prayer Leader introduces the Ben. Ant., Mag. Ant., and the "Our Father" in the absence of the Prioress and Sub-Prioress.  
 SAT: (7) 23<sup>rd</sup> Week in Ordinary Time p. 72  
 Hymn: BB 673 "Healing River Of The Spirit" STG  
 Ps. 66 – Mode 6a Ps. 16 – Mode 1a  
 Ps. 122 – Mode 8a Canticle – Intoner/All  
 Gospel: Mk. 7:31-37 Reflection: Sr. Kathryn  
 Resp. sung Mag. Ant. p. 214 (B)  
 Mag. D – Mode 7a "Salve Regina"

SUN: (8) 23<sup>rd</sup> Sunday in Ordinary Time p. 78  
 Hymn: BB 522 "The Eyes And Hands..." STG  
 Ps. 116b – Intoner/All Ps. 129 – Mode 1  
 Ps. 130 – Mode 2 Canticle – Mode 5a  
 Resp. sung Mag. Ant. p. 214 (B)  
 Mag. B – Mode 7 "Salve Regina"

MON: (9) St. Peter Claver, Mem. p. 82  
 Hymn: BB 556 "Glory And Praise..." (vs. 1, 4) SML  
 Ps. 139 BB 442 "O God, You Search Me"  
 Ps. 140 – Recite  
 Ps. 54 – Mode 1a Canticle – Mode 6a  
 Resp. sung. Mag. Ant.  
 Mag. BB 693 "Mary's Song"  
 "Hail, O Holy Queen"

TUES: (10) Weekday p. 87  
 Hymn: #5 "Evening Hymn" STG  
 Ps. 27 – Intoner/All Ps. 32 – Mode 1a  
 Ps. 61 – Recite  
 Canticle BB 581 "Worthy Is The Lamb"  
 Resp. sung Mag. Ant.  
 Mag. H

WED: (11) Weekday p. 93  
 Hymn: BB 512 "Psalm 42" SMB  
 Ps. 4 – Mode 4 Ps. 44 – Recite  
 Ps. 52 – Mode 2 Canticle – Mode 8  
 Resp. sung Mag. Ant.  
 Mag. BB 845 "Gospel Canticle"  
 Padre Nuestro

THUR: (12) Weekday p. 99  
 Hymn: BB 526 "Holy Wisdom, Lamp..." Str/SAL  
 Ps. 89a – Mode 6 Ps. 89b – Recite  
 Ps. 89c – Intoner/All  
 Canticle BB 420 "Earthen Vessels"  
 Resp. sung Mag. Ant.  
 Mag. BB 826 "Luke 1: Magnificat"

FRI: (13) St. John Chrysostom, Mem. p. 104  
 Hymn: #9 "The Twilight Shadows" SKM  
 Ps. 55a – Intoner/All Ps. 55b – Mode 1a  
 Ps. 72 – Recite Canticle – Mode 7a  
 Resp. sung Mag. Ant.  
 Mag. D – Mode 7

**MASS CALENDAR**  
**September 8 - 14, 2024**  
**Cycle B – Year II**

*Presider: Fr. Jeremy*

SUN: (8) 23<sup>rd</sup> Sunday in Ordinary Time  
Ent: BB 647 “Enter The Journey”  
Glo: BB 866 (Mass Of The Resurrection)  
Resp. sung: Schola Sheet  
“Praise the Lord, my soul!”

L 128  
STG

G. Acc: Schola Sheet  
Gospel, Homily, Nicene Creed  
Prayer of the Faithful, Pres. of Gifts  
Prep. of Gifts: Instrumental  
Holy & Serv. Music: BB 869, 871, 873, 874  
Com: BB 479 “Shelter Me, O God”

---

*Presider: Fr. Prior Bede*

TUES: (10) Weekday L 438  
Ent: BB 723 “Ye Watcher And Ye Holy Ones” TB

Resp. sung: Prayer Leader verses

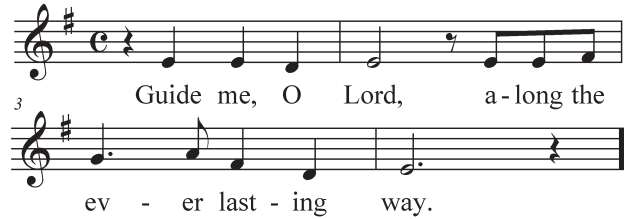


G. Acc: BB 877, omit verse (Mass Of Renewal)  
Holy & Serv. Music: BB 879, 881, 883, 884  
Com: BB 328 “Bread Of Life”

*Presider: Fr. Sean*

THUR: (12) Weekday L 440  
Ent: BB 524 “God Of Mercy” (3 vs.) Str/SAL

Resp. sung: Prayer Leader verses



G. Acc: BB 926, omit verse (Mass Of Spirit And Grace)  
Holy & Serv. Music: BB 928, 930, 932  
Lamb: Recite (Prayer Leader intone)  
Com: BB 358 “God’s Holy Gifts”

---

*Presider: Fr. Jeremy*

SAT: (14) Exaltation of the Cross, Feast L 638  
Ent: BB 144 “Glory In The Cross” (vs. 1, 3) SKM  
Glo: BB 915 (Mass Of Christ The Savior)

Resp. sung: Schola Sheet  
“Do not forget the works of the Lord.”

G. Acc: BB 916, omit verse  
Holy & Serv. Music: BB 918, 919, 922, 923  
Com: BB 341 “Behold The Lamb”