

WEEK 3 Easter*Choir: Left*

Prayer Leader: Sr. Kathy Huber
 Reader: Srs. Mary Beth/Anna Corrine
 Intoner: Sr. Jean Marie

MORNING PRAYER

SUN: (14) Third Sunday of Easter p. 157
 Inv./Hymn: BB 571 "Let Heaven Rejoice" Str/SRW
 Ps. 93 – Mode 6a Ps. 63 – Mode 5a
 Canticle – Litany PDs. 148 – Mode 8a
 Resp. sung Ben. Ant. – p. 423 (B)
 Ben. – Mode 2a

MON: (15) Easter Weekday p. 166
 Inv. Ant. sung, Intoner verses Ps. 100 SML
 Hymn: 558 "Come, Christians, Join To Sing"
 Ps. 84 – Recite Ps. 45 – Mode 5a
 Canticle – Mode 6a Ps. 96 – Mode 8a
 Resp. sung Ben. Ant.
 Ben. E

TUES: (16) Easter Weekday p. 178
 Inv/Hymn: #4 "Sing You Faithful..." TB
 Ps. 85 – Intoner/All Ps. 2 – Mode 5a
 Canticle – Mode 6 Ps. 29 – Mode 8
 Resp. sung Ben. Ant.
 Ben. B – Mode 7a

WED: (17) Easter Weekday p. 189
 Inv./Hymn: #5 "Sing Gently, O Earth" SRW
 Ps. 86 – Recite Ps. 58 – Mode 2a
 Canticle – Intoner/All Ps. 98 – Mode 7
 Resp. sung Ben. Ant.
 Ben. E

THU: (18) Easter Weekday p. 200
 Inv./Hymn: BB 554 "Sing A New Song" SSA
 Ps. 87 – Mode 8 Ps. 60 – Recite
 Canticle – Recite Ps. 99 – Mode 6a
 Resp. sung Ben. Ant.
 Ben. C – Mode 7

FRI: (19) Easter Weekday p. 211
 Inv./Hymn: BB 171 "Alleluia! Love Is Alive" Str/STG
 Ps. 18a – Recite Ps. 18b – Mode 5a
 Canticle – Solo Ps. 48 – Mode 8
 Resp. sung Ben. Ant.
 Ben: BB 838 "Gospel Canticle" (Forest Green)

SAT: (20) Easter Weekday p. 224
 Inv./Hymn: BB 163 "Come, Ye Faithful..." SRW
 Ps. 81 – Mode 5a Ps. 73 – Intoner/All
 Canticle – Mode 1a Ps. 47 – Mode 6
 Resp. sung Ben. Ant.
 Ben: BB 827 "Luke 1: Benedictus"

The Prayer

Leader introduces the Ben. Ant., Mag. Ant., and the "Our Father" in the absence of the
 of the
 Prioress and Sub-Prioress.

EVENING PRAYER

SAT: (13) Third Sunday of Easter p. 152
 Hymn: G 539 "Sing With All The Saints..." SRW
 Ps.141 – Mode 5a Ps.116b-117 – Intoner/All
 Ps.138 – Mode 6a Canticle – Mode 8a
 Gospel: Lk 24:35-48 Reflection: Sr. Sarah Cathleen
 Resp. sung Mag. Ant. – p. 423 (B)
 Mag. A – Mode 2 "Regina Coeli"

SUN: (14) Third Sunday of Easter p. 162
 Hymn: Sheet "Glory In The Cross" Str/SRW
 Ps. 110 – Mode 7 Ps. 111 – Intoner/All
 Ps. 113 – Mode 6a Canticle – Schola Card
 Resp. sung Mag. Ant. – p. 423 (B)
 Mag. C – Mode 2a "Regina Coeli"

MON: (15) Easter Weekday p. 173
 Hymn: BB 182 "Now The Green Blade Rises" SML
 Ps. 123 – Mode 5a Ps. 124 – Mode 6a
 Ps. 59 – Intoner/All Canticle – Mode 8a
 Resp. sung Mag. Ant.
 Mag BB 845 "Luke 1: My Soul Rejoices"

TUES: (16) Easter Weekday p. 184
 Hymn: #3 "The Day Of Resurrection" SMH
 Ps. 125 – Recite Ps. 129 – Mode 1a
 Ps. 135 – Intoner/All Canticle – Mode 8
 Resp. sung Mag. Ant.
 Mag. D

WED: (17) Easter Weekday p. 195
 Hymn: G 537 "Easter Alleluia" (3 vs.) SRW
 Ps. 120 – Mode 1a Ps. 50 – Intoner/All
 Ps. 127 – Mode 5 Canticle – Recite
 Resp. sung Mag. Ant.
 Mag. F *Padre Nostro*

THURS: (18) Easter Weekday p. 206
 Hymn: BB 606 "Your Words Are Spirit..." SSA
 Ps. 132 – Intoner/All Ps. 75 – Mode 6
 Ps. 61 – Mode 8 Canticle – Recite
 Resp. sung Mag. Ant.
 Mag. F

FRI: (19) Easter Weekday p. 219
 Hymn: BB 183 "Alleluia! He Is Risen" Str/STG
 Ps. 35a – Intoner/All Ps. 35b – Mode 6a
 Ps. 131 – Recite Canticle – Mode 6
 Resp. sung Mag. Ant.
 Mag. BB 693 "Mary's Song"

MASS CALENDAR
April 14 - 20, 2024
Cycle A - Year I

Presider: Fr. Julian

SUN: (14) Third Sunday of Easter
Ent: BB 566 "Lift Up Your Hearts"
Glo: BB 885 (Mass Of Creation)
Resp. sung: BB p. 146, Cantor verses
"Lord, let your face shine on us."

L47
Str/SRW

G. Acc: BB p. 147, Cantor verse
Gospel, Homily, Apostles Creed,
Prayer of the Faithful, Pres. of Gifts
Prep. of Gifts:
Holy & Serv. Music: BB 886, 887, 888, 889
Com: BB 339 "The Supper Of The Lord"

Presider: Fr. Sean

TUE: (16) Easter Weekday **L274**
Ent: BB 167 "Two Were Bound For Emmaus" TB
Resp. Ant. sung: Prayer Leader verses



G. Acc: BB 926, omit verse (Mass Of Spirit And Grace)
Holy & Serv. Music: BB 928, 930, 932, 933
Com: BB 342 "I Am The Bread Of Life"

Presider: Fr. Eugene

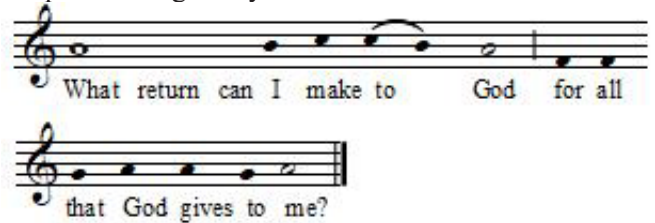
THU: (18) Easter Weekday **L276**
Ent: BB 308 "The God Of All Grace" SSA
Resp. Ant. sung: Prayer Leader verses



G. Acc: BB 916, omit verse
(Mass Of Christ The Savior)
Holy & Serv. Music: BB 918, 920, 922, 923
Com: BB 362 "Spirit And Grace"

Presider: Fr. Jeremy

SAT: (20) Easter Weekday **L278**
Ent: BB 574 "This Day Was..." (vs. 1, 2, 4) SRW
Resp. Ant. sung: Prayer Leader verses



G. Acc: BB 947, Celtic (omit verse)
Holy & Serv. Music: BB 892, 894, 896
(Heritage Mass)
Lamb: Recite (Prayer Leader intones)
Com: BB 419 "Lord, To Whom Shall We Go"