

WEEK 2 Ordinary Time*Choir: right side*

Prayer Leader: Sr. Jean Marie
 Reader: Srs. Mary Beth/Jayn Lein
 Intoner: Sr. Mary Lou

MORNING PRAYER

SUN: (20) Our Lord Jesus Christ the King, Sol.
 Inv. Ant. sung, Intoner vs. Ps. 100 F'day Bk. p.350
 Hymn BB 734 "Hail, Redeemer, King Divine" TB
 Ps. 8 – Mode 8 Ps. 93 – Mode 1
 Canticle – Recite Ps. 150 – Mode 7
 Resp. sung Ben. Ant. p. 355
 Ben. D - Mode 5

MON: (21) Presentation of Blessed Virgin Mary, Mem. p. 49
 Inv. Ant. sung. Intoner vs. Ps. 67 SRW
 Hymn: BB 705 "There Is Nothing Told" (2 vs.) SML
 Ps. 76 – Mode 1a Ps. 88 – Recite
 Canticle – Mode 5a Ps. 147a – Mode 6a
 Resp. sung Ben. Ant.
 Ben. D – Mode 8a

TUES: (22) St. Cecelia, Mem. p. 56
 Inv./Hymn: #4 "As Morning Breaks" SRW
 Ps. 45 – Intoner/All Ps. 47 – Mode 6
 Canticle – Recite Ps. 147b – Mode 7
 Resp. sung Ben. Ant.
 Ben. BB 837 "Gospel Canticle (Benedictus)"

WED: (23) Weekday p. 62
 Inv./Hymn: BB 739 "Lead Me, Lord" SMB
 Ps. 29 – Mode 6a Ps. 73 – Recite
 Canticle – Mode 8a Ps. 150 – Mode 7a
 Resp. sung Ben. Ant.
 Ben. C – Mode 5a

THUR: (24) Thanksgiving p. 68
 Inv./Hymn: BB 609 "Thanks Be To God" Str/STG
 Ps. 33 – Intoner/All Ps. 97 – Mode 6a
 Canticle – Mode 7a Ps. 146 – Mode 8a
 Resp. sung Ben. Ant.
 Ben. F

FRI: (25) Weekday p.74
 Inv./Hymn: BB 638 "Morning Song" SSA
 Ps. 78a – Mode 6 Ps. 78b – Intoner/All
 Canticle – Recite Ps. 47 – Mode 8
 Resp. sung Ben. Ant.
 Ben. BB 826 "Luke 1: Benedictus" (Farrell)

SAT: (26) Weekday p. 80
 Inv./Hymn: #8 "How Beautiful The Light" SRW
 Ps. 78c – Intoner/All Ps. 78d – Mode 6a
 Canticle – Recite Ps. 149 – Mode 8a
 Resp. sung Ben. Ant.
 Ben. E

EVENING PRAYER

The Prayer
 Leader introduces the Ben. Ant.,
 Mag. Ant., and the "Our Father"
 in the absence of the
 Prioress and Sub-Prioress.

SAT: (19) Our Lord Jesus Christ the King, Sol.
 Hymn: BB 732 "Alleluia!..." (vs. 1, 2, 5) F'day Bk. p. 344
 Ps. 110 – Mode 6 Ps. 113 – Mode 5 SMM
 Ps. 138 – Intoner/All Canticle – Mode 5
 Gospel: Luke 23:35-43 Commentary
 Resp. sung Mag. Ant. p. 349
 Mag. B – Mode 1 "Salve Regina"

SUN: (20) Our Lord Jesus Christ the King, Sol.
 Hymn: BB 571 "Festival..." (3 vs.) F'day Bk. p. 355
 Ps. 111 – Mode 6a Ps. 72 – Mode 5a SMM
 Ps. 145 – Intoner/All Canticle – Mode 5a
 Resp. sung Mag. Ant. p. 363
 Mag. D – Mode 7a "Salve Regina"

MON: (21) Presentation of Blessed Virgin Mary, Mem. p. 44
 Hymn: BB 693 "O Holy Mary..." (2 vs.) SML
 Ps. 136 – Litany Ps. 138 – Mode 5a
 Ps. 126 – Mode 6a Canticle – Mode 8a
 Resp. sung Mag. Ant.
 Mag. 698 "Mary's Song"

TUES: (22) St. Cecelia, Mem. p. 49
 Hymn: #6 "Let Evening Come Upon Us" SMH
 Ps. 21 – Mode 6 Ps. 26 – Recite
 Ps. 30 – Mode 5a Canticle – Intoner/All
 Resp. sung Mag. Ant.
 Mag. H

WED: (23) Weekday p. 54
 Hymn: BB 615 "Isaiah 49" SMB
 Ps. 19a – Mode 6 Ps. 19b – Mode 7
 Ps. 40 – Recite Canticle – Mode 8
 Resp. sung Mag. Ant.
 Mag. C – Mode 7a Padre Nuestro

THUR: (24) Thanksgiving p. 60
 Hymn: BB 301 "The God Of All Grace" Str/STG
 Ps. 42 – Mode 6 Ps. 50 – Intoner/All
 Ps. 113 – Mode 7
 Canticle – Sheet "All You Works Of God"
 Resp. sung Mag. Ant.
 Mag. BB 844 "Gospel Canticle"

FRI: (25) Weekday p. 66
 Hymn: BB 638 "Evening Song" SSA
 Ps. 49a – Mode 1 Ps. 49b – Recite
 Ps. 59 – Intoner/All Canticle – Mode 6a
 Resp. sung Mag. Ant.
 Mag. BB 825 "Luke 1: Magnificat" (Farrell)

MASS CALENDAR
November 19 - 26, 2022
Cycle C - Year II

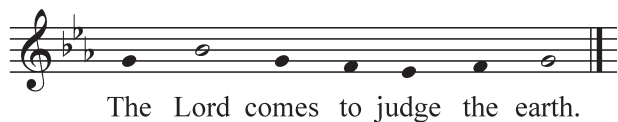
Presider: Fr. Julian

SUN: (20) Our Lord Jesus Christ the King, Sol. L 162
Ent: BB 736 "To Jesus Christ, Our Sovereign King" TB
Glo: BB 924 (Mass of Spirit and Grace)
Resp. sung: Schola Sheet
"Let us go rejoicing to the house of the Lord."

G. Acc: BB 946 Celtic, Schola verse
Gospel, Homily, Nicene Creed
Prayer of the Faithful, Pres. of Gifts
Prep. of Gifts
Holy & Serv. Music: BB 927, 929, 931, 932
Com: BB 498 "Unless A Grain Of Wheat"

Presider: Fr. Simon

TUES: (22) St. Cecelia, Mem. L 504
Ent: BB 550 "Sing A New Song" SRW
Resp. Ant. sung. Prayer Leader vs.



G. Acc: BB p. 234, omit verses
Holy & Serv. Music: BB 891, 893, 895 (Heritage Mass)
Lamb: Recite (Prayer Leader intones)
Com: BB 355 "Come To Me And Drink"

Presider: Fr. Eugene
Sir. 50:22-24, 1Cor 1:3-9, Lk 17:11-19

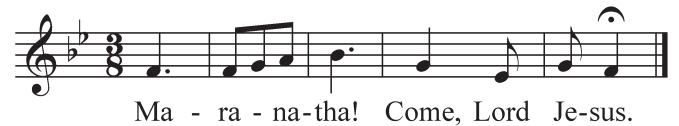
THUR: (24) Thanksgiving Sheet
Ent: BB 561 "10,000 Reasons (Bless The Lord) Str/STG
Glo: BB 884 (Mass of Creation)
Resp. Ant. sung. BB p. 235, Schola Sheet

"Blessed be the name of the Lord forever"

G. Acc: Celtic, Schola verses
Holy & Serv. Music: BB 885, 886, 887, 888
Com: BB 340 "God's Holy Gifts"

Presider: Fr. Sean

SAT: (26) Weekday L 508
Ent: BB 303 "Gather Us In" (vs. 1 & 3) SRW
Resp. Ant. sung. Prayer Leader verses.



G. Acc: BB 915, omit vs. (Mass of Christ the Savior)
Holy & Serv. Music: BB 917, 919, 921
Lamb: Recite (Prayer Leader intones)
Com: BB 354 "Bread Of Life" (Farrell)