

WEEK 1 Ordinary Time

Choir: left side

Prayer Leader: Sr. Susan Mary
Reader: Sr. Robin Lynn
Intoner: Sr. Jacqueline

MORNING PRAYER

SUN: (18) 25th Sunday in Ord Time p. 1
Inv./Hymn: BB 564 "Praise The Lord, ..." RW
Ps. 118 – Intoner/All Ps. 63 – Mode 7
Canticle – Mode 5 Ps. 150 – Mode 8
Resp. sung Ben. Ant. p. 242 (C)
Ben. C – Mode 6

MON: (19) Weekday p. 7
Inv./Hymn TMH p. 20 "Praise The Name..." Str/SBE
Ps. 64 – Mode 8 Ps. 90 – Recite
Canticle – Mode 5 Ps. 146 – Mode 6
Resp. sung Ben. Ant.
Ben. TMH p. 5 "Benedictus"

TUES: (20) Sts. Andrew Kim & Comp., Mem. p. 13
Inv./Hymn: #9 "Praise The God Of All Creation" STG
Ps. 28 – Mode 5a Ps. 86 – Intoner/All
Canticle – Mode 6a Ps. 147a – Mode 8a
Resp. sung Ben. Ant.
Ben. B - Mode 7a

WED: (21) St. Matthew, Feast F'day Bk. p. 203
Inv./Hymn: #3 "The Apostles' Glory..." STG
Ps. 75 – Mode 6a Ps. 96 – Intoner/All
Canticle – Mode 5a Ps. 148 – Mode 8a
Resp. sung Ben. Ant. sung p. 208
Ben. D – Mode 2a

THU: (22) Weekday p. 25
Inv./Hymn: #1 "O Splendor Of God's Glory" SML
Ps. 3 – Mode 1a Ps. 80 – Mode 5a
Canticle – Recite Ps. 47 – Mode 6a
Resp. sung Ben. Ant.
Ben. C - Mode 8a

FRI: (23) St. Pius of Pietrelcina, Mem. p. 31
Inv./Hymn: BB 544 "Sing A Joyful Song" SSA
Ps. 85 – Mode 5a Ps. 51 – Recite
Canticle – Mode 6a Ps. 99 – Intoner/All
Resp. sung Ben. Ant.
Ben. C – Mode 1

SAT: (24) Weekday p. 37
Inv./Hymn: #7 "O Christ, Our Teacher" SRW
Ps. 81 – Intoner/All Ps. 58 – Mode 1a
Canticle – Recite Ps. 98 – Mode 7a
Resp. sung Ben. Ant.
Ben. E

The Prayer
Leader

introduces SAT: (17) 25th Week in Ord Time p. 1
the Ben. Ant., Hymn: #4 "Evening Hymn" SMM
Mag. Ant., Ps. 141 – Mode 7 Ps. 144 – Intoner/All
and the Ps. 127 – Mode 4 Canticle – Mode 8
"Our Father" Gospel: Lk 16:1-13 Reflection: Sr. Rebecca
in the absence of the Resp. sung Mag. Ant. p. 216 (C)
of the Mag. C – Mode 6 "Salve Regina"

p. 1 Sub-Prioress.
SUN: (18) 25th Sunday in Ord Time p. 6
Hymn: BB 625 "God Of The Hungry" SMM
Ps. 110 – Mode 1a Ps. 111 – Mode 7a
Ps. 112 – Intoner/All Canticle – Mode 8A
Resp. sung Mag. Ant. 216 (C)
Mag. D – Mode 6a "Salve Regina"

MON: (19) Weekday p. 10
Hymn: BB 536 "Peace Is Flowing..." (3 vs.) Str/SBE
Ps. 135 – Mode 6a Ps. 137 – Intoner/All
Ps. 120 – Mode 5 Canticle – Mode 7
Resp. sung Mag. Ant. sung
Mag. BB 844 "Magnificat"
"Hail, O Holy Queen"

TUES: (20) Sts. Andrew Kim & Comp., Mem. p. 16
Hymn: #5 "Evening Hymn" SMH
Ps. 22a – Intoner/All Ps. 22b – Mode 1a
Ps. 134 – Recite Canticle – Mode 6a
Resp. sung Mag. Ant.
Mag. B - Mode 5a

WED: (21) St. Matthew, Feast F'day Bk. p. 209
Hymn: #4 "Let All On Earth Their Voices Raise" STG
Ps. 130 – Mode 1a Ps. 97 – Mode 6
Ps. 126 - Mode 7 Canticle – Intoner/All
Resp. sung Mag. Ant. sung p. 213
Mag. B – Mode 5 Padre Nuestro

THU: (22) Weekday p. 24
Hymn: BB 680 "How Lovely..." (vs 3, 4) SML
Ps. 35a – Recite Ps. 35b – Mode 1a
Ps. 62 – Mode 5a Canticle – Mode 6a
Resp. sung Mag. Ant.
Mag. L

FRI: (23) St. Pius of Pietrelcina, Mem. p. 30
Hymn: BB 570 "Alleluia No. 1" SSA
Ps. 38 – Intoner/All Ps. 46 – Mode 5a
Ps. 75 – Mode 8 Canticle – Recite
Resp. sung Mag. Ant.
Mag. B - Mode 1

Blessing
of
weekend
servers

MASS CALENDAR
September 17-24, 2022
Cycle C – Year II

Presider: Fr. Julian

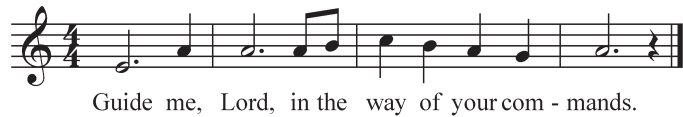
SUN: (18) 25th Sunday in Ordinary Time L 135
Ent: BB 420 “All Are Welcome” RW
Glo: BB 865 (Mass of The Resurrection)
Resp. sung: BB p. 213, Schola Sheet

“Praise the Lord who lifts up the poor.”

G. Acc: BB p. 214, Schola Sheet
Gospel, Homily, Nicene Creed
Prayer of the Faithful
Pres. of Gifts, Prep. of Gifts: Instrumental
Holy & Serv. Music: BB 868, 870, 872, 873
Com: BB 340 “God’s Holy Gifts”
Recessional

Presider: Fr. Julian

TUE: (20) Sts. Andrew Kim & Comp., Mem. L 450
Ent. BB 306 “Gathered In” (vs. 1, 2, 5) STG
Resp. Ant. sung. Prayer Leader verses



G. Acc: BB 915 (Mass Of Christ The Savior)
Holy & Serv. Music: BB 917, 918, 921, 922
Com: BB 324 “I Received The Living God”

Presider: Fr. Simon

WED: (21) St. Matthew, Feast L 643
Ent: BB 718 “Saints And Beloved Of God” (vs. 3, 4) STG
Glo: BB 914 (Mass Of Christ The Savior)
Resp. sung: Schola Bk. R-9

“Their message goes out through all the earth.”

G. Acc: BB 936 (Mass of St. Mary Magdalene)
Holy & Serv. Music: BB 938, 940, 942, 943
Com: BB 501 “Come, Follow Me”

Presider: Fr. Prior Bede

THU: (22) Weekday L 452
Ent: BB 307 “Come To The Feast” SML
Resp. Ant. sung. BB p. 208, Prayer Leader verses

“In every age, O Lord, you have been our refuge.”

G. Acc: BB 925 (Mass of Spirit and Grace)
Holy & Serv. Music: BB 927, 928, 931, 932
Com: BB 336 “Behold The Lamb”

Presider: Fr. Jeremy

SAT: (24) Weekday L 454
Ent: Mode 6, 3 lines SRW

“I am the salvation of the people, says
the Lord. Should they cry to me in any
distress, I will hear them, and I will be
their Lord for ever.”

Resp. Ant. sung, Prayer Leader verses



G. Acc: BB p. 214, omit verse
Holy & Serv. Music: BB 891, 893, 895 (Heritage Mass)
Lamb of God: Recite (Prayer Leader intones)
Com: BB 362 “Bread Of Life” (Fisher)